

Measurement request from test house for CCC certification
From 28/09/2014 to next revision

Brand	Nova	Test house name	DHV	AUTOMATIC CALCULATION
Model	Triton 2 light	CCC certification n°		FILL UP THIS COLOR
Size	XS	Certification date	21.05.15	DELETE & PASTE DRAWING OR PICTURE

Canopy dimensions

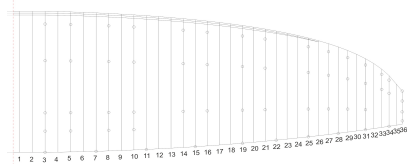
	Rib n° from center	Distance	Tension	Manual tolerances	Aspect ratio 4*span / (chord A+2*P+Chord B)	If there are ambiguous aspects concerning extremities showing the measurement extremities
Full Span	X	11770	3KG	±2%		
1/2 Trailing Edge	X	5991	3KG	±1%		
Chord A	1	2265	3KG	±1%	6.4692545517	
Chord B		2056	3KG	±1%		

Chord length, inlet position, tabs position measured from trailing edge.
 (The tab A & B & C can be on different rib, take care to specify it)

On first lined rib with all lines (A,B,C,D) if not all tab on rib specify rib number	Rib n° from center	Distance	Tension	Manual tolerances
Chord	3	2265	3KG	±10mm
Top of inlet	3	2260	3KG	±10mm
Bottom of inlet	3	2215	3KG	±10mm
Tab A	3	2050	3KG	±10mm
Tab B	3	1940	3KG	±10mm
Tab C	3	600	3KG	±10mm
Tab D	3	325	3KG	±10mm

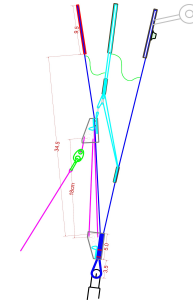
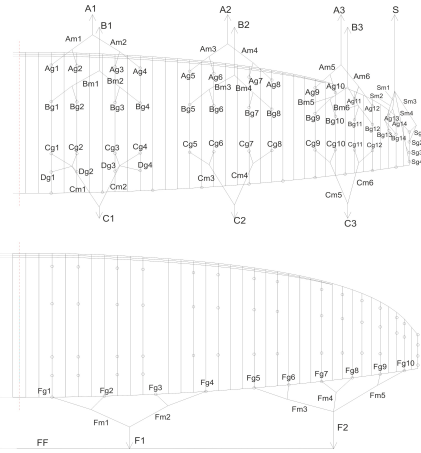
On first lined rib of Group 2 with all line (A,B,C,D) if not all tab on rib specify rib number	Rib n° from center	Distance	Tension	Manual tolerances
Chord	16	2005	3KG	±10mm
Top of inlet	16	2000	3KG	±10mm
Bottom of inlet	16	1965	3KG	±10mm
Tab A	16	1815	3KG	±10mm
Tab B	16	1295	3KG	±10mm
Tab C	16	550	3KG	±10mm

On last lined rib (stabilo) (from center)	Rib n° from center	Distance	Tension	Manual tolerances
Chord		530	3KG	±10mm
Tab A		620	3KG	±10mm
Tab B		370	3KG	±10mm
Tab C		207	3KG	±10mm
Tab D		47	3KG	±10mm



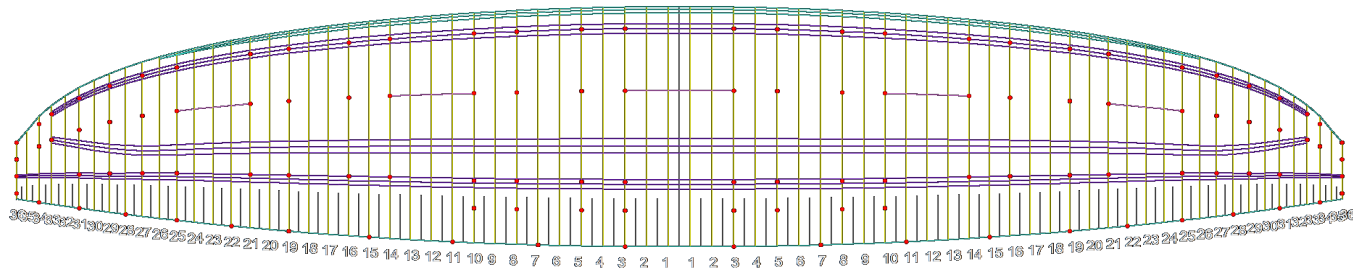
ABSOLUTE LINE LENGTH FROM BOTTOM RIB TO CANOPY IN mm									
LINED RIB NUMBER	A	B	D	C	BRAKES	Tension	Manual tolerances		
1	7409	7338	7490	7413	7807	SKG	±10mm		
2	7339	7221	7424	7336	7301	SKG	±10mm		
3	7307	7237	7384	7305	7093	SKG	±10mm		
4	7339	7269	7408	7332	6942	SKG	±10mm		
5	7234	7171	6912	7219	6777	SKG	±10mm		
6	7161	7096	7146	6637	SKG	±10mm			
7	7099	7037	7042	6598	SKG	±10mm			
8	7108	7051	7089	6568	SKG	±10mm			
9	6948	6904	6923	6585	SKG	±10mm			
10	6884	6838	6860	6563	SKG	±10mm			
11	6822	6783	6796	SKG	±10mm				
12	6813	6782	6802	SKG	±10mm				
13	6813	6566	6647	SKG	±10mm				
14	6549	6546	SKG	±10mm					
15	6485	6495	SKG	±10mm					
16			SKG	±10mm					
17			SKG	±10mm					
18			SKG	±10mm					
19			SKG	±10mm					
20			SKG	±10mm					
21			SKG	±10mm					
22			SKG	±10mm					
23			SKG	±10mm					
24			SKG	±10mm					

Riser length						Erase the non-necessary cells Keep the manufacturer's branch names		
from bottom riser to top mation on each branche	A	A'	B	B'	C	calculated at	Manual tolerances	Attachment rod diameter in mm
Neutral	543		543				SKG ±1.5mm	6
Full speed setting	Manual tolerances		Manual tolerances		Manual tolerances		Total speed Range (2a+15)	218 ±1.5mm
A-B	63 ±1.5mm		B'-B1 ±1.5mm		C-B ±1.5mm			
B-C	155 ±1.5mm							



Supplier	Line type	Supplier	Line type S.M	Supplier	Line type S.M	Supplier	Line type S.M
A1	Liros PPSL191-RED	B1	Liros PPSL191-YEL	C1	Edelnd ED8KU-120D-RED	S	Eldenrd ED8KU-120D-RED
A2	Liros PPSL191-RED	B2	Liros PPSL191-YEL	C2	Edelnd ED8KU-120D-RED	SM01	Eldenrd ED8KU-500D-RED
A3	Edelnd ED8KU-120D-RED	B3	Edelnd ED8KU-120D-RED	C3	Edelnd ED8KU-120D-RED	SM02	Eldenrd ED8KU-500D-RED
AM01	Edelnd ED8KU-120DD-RED	BM01	Edelnd ED8KU-120DD-RED	CM01	Edelnd ED8KU-90DD-RED	SM03	Eldenrd ED8KU-500D-RED
AM02	Edelnd ED8KU-120DD-RED	BM02	Edelnd ED8KU-120DD-RED	CM02	Edelnd ED8KU-90DD-RED	SM04	Eldenrd ED8KU-500D-RED
AM03	Edelnd ED8KU-120DD-RED	BM03	Edelnd ED8KU-120DD-RED	CM03	Edelnd ED8KU-90DD-RED	SG01	Liros ED8KU-500D-RED
AM04	Edelnd ED8KU-120DD-RED	BM04	Edelnd ED8KU-120DD-RED	CM04	Edelnd ED8KU-90DD-RED	SG02	Liros ED8KU-500D-RED
AM05	Edelnd ED8KU-90DD-RED	BM05	Edelnd ED8KU-90DD-RED	CM05	Edelnd ED8KU-90DD-RED	SG03	Liros ED8KU-500D-RED
AM06	Edelnd ED8KU-90DD-RED	BM06	Edelnd ED8KU-90DD-RED	CM06	Edelnd ED8KU-90DD-RED	SG04	Liros ED8KU-500D-RED
AG01	Edelnd ED8KU-50DD-RED	BG01	Edelnd ED8KU-50DD-RED	CG01	Edelnd ED8KU-50DD-RED	FF	Eldenrd ED730-240-ORG
AG02	Edelnd ED8KU-50DD-RED	BG02	Edelnd ED8KU-50DD-RED	CG02	Edelnd ED8KU-50DD-RED	F1	Eldenrd ED8KU-90D-RED
AG03	Edelnd ED8KU-50DD-RED	BG03	Edelnd ED8KU-50DD-RED	CG03	Edelnd ED8KU-50DD-RED	F2	Eldenrd ED8KU-90D-RED
AG04	Edelnd ED8KU-50DD-RED	BG04	Edelnd ED8KU-50DD-RED	CG04	Edelnd ED8KU-50DD-RED	FM01	Liros ED8KU-500D-RED
AG05	Edelnd ED8KU-50DD-RED	BG05	Edelnd ED8KU-50DD-RED	CG05	Edelnd ED8KU-50DD-RED	FM02	Liros ED8KU-500D-RED
AG06	Edelnd ED8KU-50DD-RED	BG06	Edelnd ED8KU-50DD-RED	CG06	Edelnd ED8KU-50DD-RED	FM03	Liros ED8KU-500D-RED
AG07	Edelnd ED8KU-50DD-RED	BG07	Edelnd ED8KU-50DD-RED	CG07	Edelnd ED8KU-50DD-RED	FM04	Liros ED8KU-500D-RED
AG08	Edelnd ED8KU-50DD-RED	BG08	Edelnd ED8KU-50DD-RED	CG08	Edelnd ED8KU-50DD-RED	FM05	Liros ED8KU-500D-RED
AG09	Edelnd ED8KU-50DD-RED	BG09	Edelnd ED8KU-50DD-RED	CG09	Edelnd ED8KU-50DD-RED	FG01	Liros ED8KU-500D-RED
AG10	Edelnd ED8KU-50DD-RED	BG10	Edelnd ED8KU-50DD-RED	CG10	Edelnd ED8KU-50DD-RED	FG02	Liros ED8KU-500D-RED
AG11	Edelnd ED8KU-50DD-RED	BG11	Edelnd ED8KU-50DD-RED	CG11	Edelnd ED8KU-50DD-RED	FG03	Liros ED8KU-500D-RED
AG12	Edelnd ED8KU-50DD-RED	BG12	Edelnd ED8KU-50DD-RED	CG12	Edelnd ED8KU-50DD-RED	FG04	Liros ED8KU-500D-RED
AG13	Edelnd ED8KU-50DD-RED	BG13	Edelnd ED8KU-50DD-RED	DG01	Edelnd ED8KU-50DD-RED	FG05	Liros ED8KU-500D-RED
AG14	Edelnd ED8KU-50DD-RED	BG14	Edelnd ED8KU-50DD-RED	DG02	Edelnd ED8KU-50DD-RED	FG06	Liros ED8KU-500D-RED
				DG03	Edelnd ED8KU-50DD-RED	FG07	Liros ED8KU-500D-RED
				DG04	Edelnd ED8KU-50DD-RED	FG08	Liros ED8KU-500D-RED
						FG09	Liros ED8KU-500D-RED
						FG10	Liros ED8KU-500D-RED

Other pictures & drawings requested from Test Laboratories



Diagonal attached to every A, B, and C loop. (except rib 34, and 36)
double diagonals on ribs 3, 10, 14, 21, 25

