

## Measurement request from test house for CCC certification From 28/09/2014 to next revision

<b>Brand</b>	Gin Gliders Inc.	<b>Test house name</b>	DHV
<b>Model</b>	Boomerang 10	<b>CCC certification n°</b>	DHV CCC-003-14
<b>Size</b>	L	<b>Certification date</b>	11.11.2014

### Canopy dimensions

Position	Rib n° from center	Distance [mm]	Tension [kg]	Manual tolerances	Aspect ratio 4*span / (chord A+2.5*Chord B)
Full Span	x	13830	3	2%	
1/2 Trailing Edge	x	7075	3	1%	
Chord A	1	2277	3	1%	
Chord B	20	2017	3	1%	

### Chord length, inlet position, tabs position measured from trailing edge.

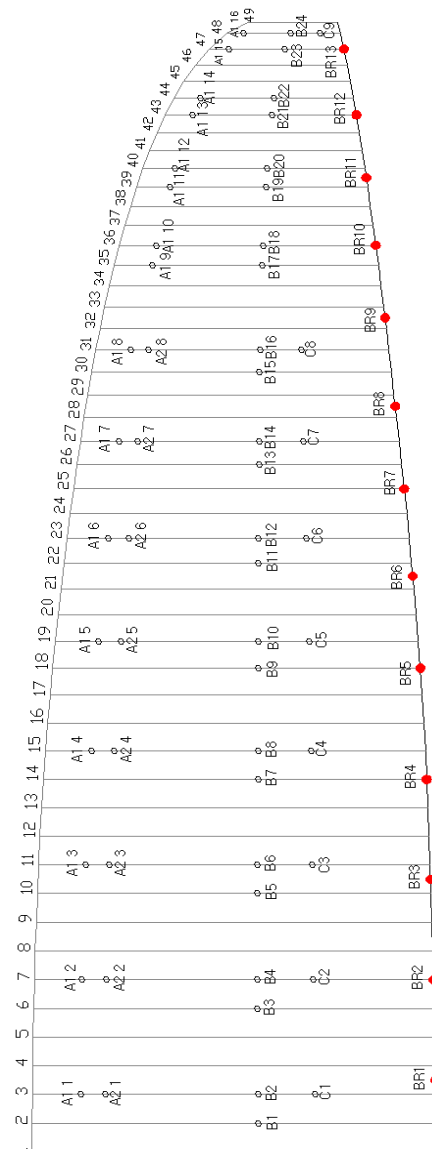
(The tab A & B & C can be on different rib, take care to specify it)

On first lined rib (from center)	Rib n° from center	Distance [mm]	Tension [kg]	Manual tolerances
Chord	2	2277	3	+/-10mm
Top of inlet	2	2220	3	+/-10mm
Bottom of inlet	2	2190	3	+/-10mm
Tab Aa*	3	1992	3	+/-10mm
Tab Ab*	3	1857	3	+/-10mm
Tab B*	2	980	3	+/-10mm
Tab C*	3	686	3	+/-10mm

On last lined rib of Group 2 (from center)	Rib n° from center	Distance [mm]	Tension [kg]	Manual tolerances
Chord	31	1641	3	+/-10mm
Top of inlet	31	1584	3	+/-10mm
Bottom of inlet	31	1565	3	+/-10mm
Tab Aa*	31	1437	3	+/-10mm
Tab Ab*	31	1340	3	+/-10mm
Tab B*	31	707	3	+/-10mm
Tab C*	31	496	3	+/-10mm

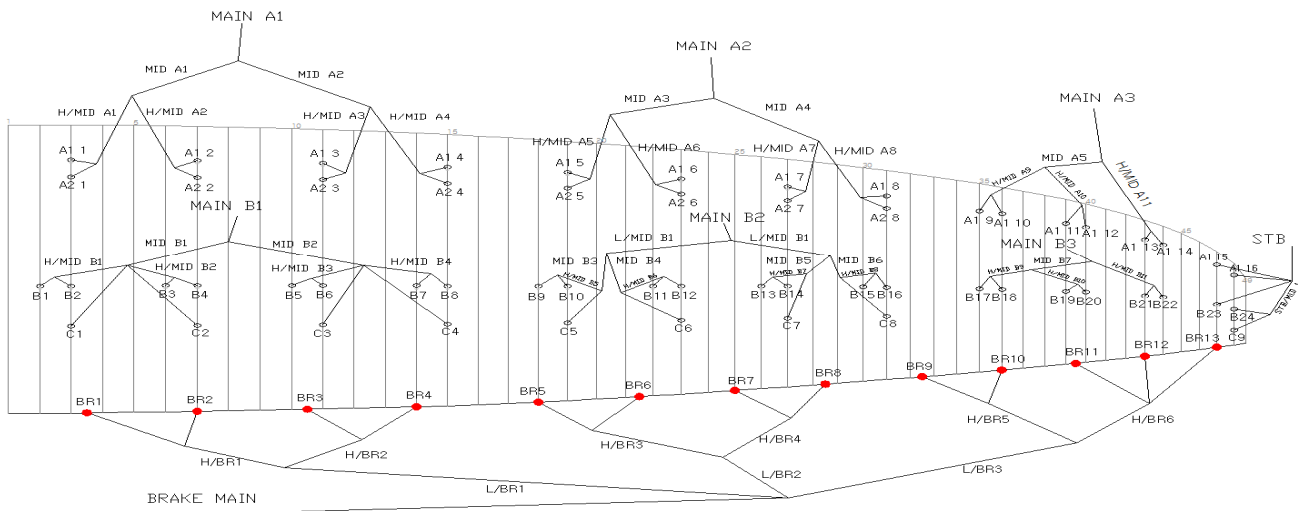
On last lined rib (stabilo) (from center)	Rib n° from center	Distance [mm]	Tension [kg]	Manual tolerances
Chord	48	643	3	+/-10mm
Tab A*	48	550	3	+/-10mm
Tab B*	48	288	3	+/-10mm
Tab C*	48	124	3	+/-10mm

\*Bridle (tab) position measurement:  
end of trailing edge to center bridle (tab)



**Absolute line length from bottom riser to canopy**

Lined Rib n°	A1	A2	B	C	Brakes	Tension [kg]	Manual tolerances
1	8.227	8.207	8.228	8.251	9.086	5	+/-10mm
2	8.090	8.069	8.170	8.142	8.843	5	+/-10mm
3	8.051	8.031	8.064	8.105	8.610	5	+/-10mm
4	8.116	8.098	8.058	8.199	8.640	5	+/-10mm
5	8.015	7.996	8.031	8.035	8.383	5	+/-10mm
6	7.871	7.854	8.022	7.924	8.247	5	+/-10mm
7	7.808	7.793	8.076	7.861	8.213	5	+/-10mm
8	7.833	7.822	8.118	7.908	8.278	5	+/-10mm
9	7.621		8.018	7.329	8.173	5	+/-10mm
10	7.568		7.960		8.114	5	+/-10mm
11	7.461		7.854		8.100	5	+/-10mm
12	7.450		7.850		8.160	5	+/-10mm
13	7.389		7.803		8.376	5	+/-10mm
14	7.388		7.787			5	+/-10mm
15	7.214		7.813			5	+/-10mm
16	7.180		7.843			5	+/-10mm
17			7.608			5	+/-10mm
18			7.555			5	+/-10mm
19			7.450			5	+/-10mm
20			7.442			5	+/-10mm
21			7.378			5	+/-10mm
22			7.377			5	+/-10mm
23			7.233			5	+/-10mm
24			7.219			5	+/-10mm

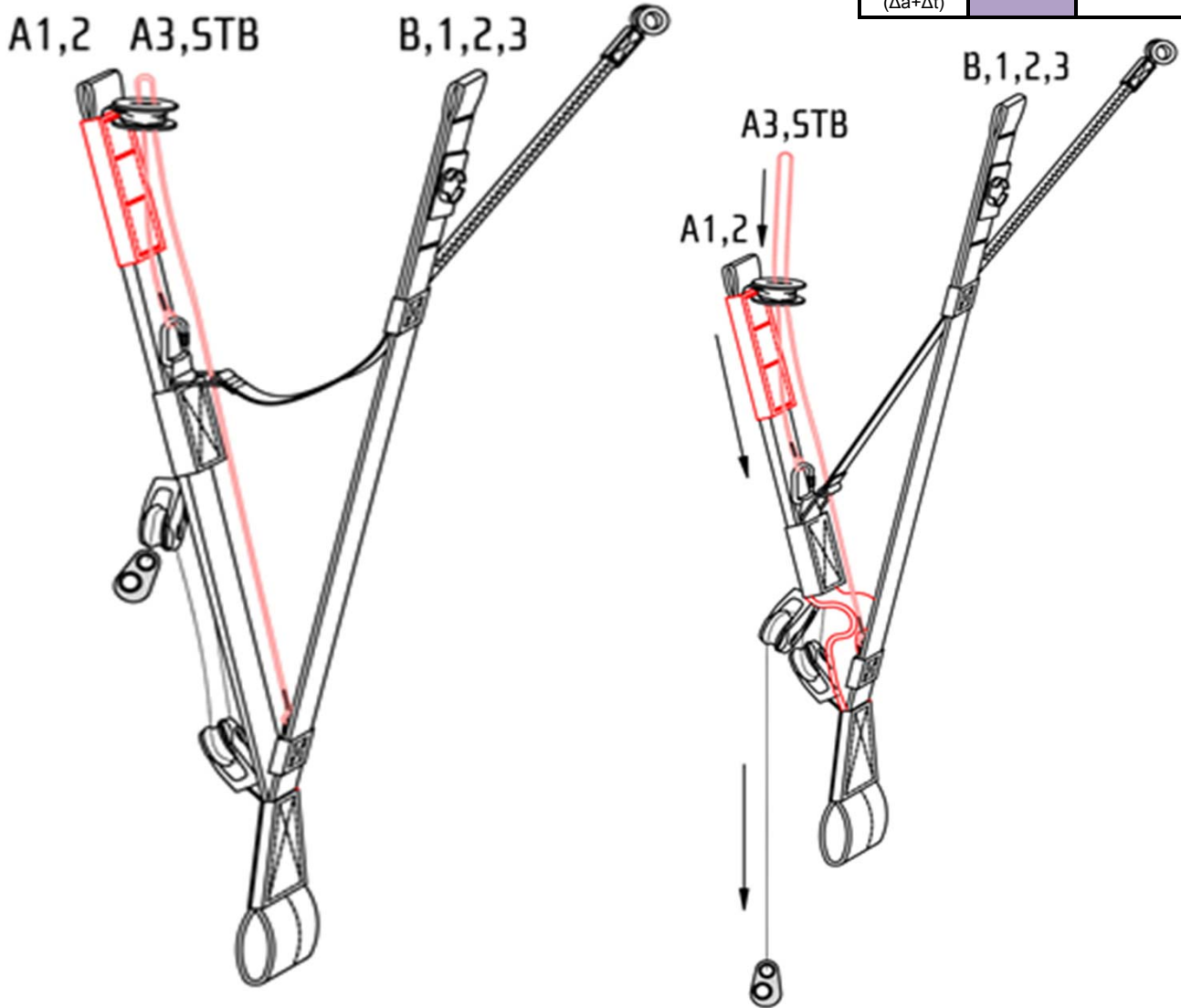


## Riser length

From bottom riser to top maillon on each branche [mm]

A1	A2	B	$\Delta t$ (= A1-B)	Tension [kg]	Manual tolerances	Attachment rod diameter [mm]
520	520	520	0	5	+/-5mm	10

Full speed setting		Manual tolerances
$\Delta a$ (=B-A1)	145	+/-5mm
B-A2	72	+/-5mm
Total speed Range ( $\Delta a + \Delta t$ )	145	+/-5mm



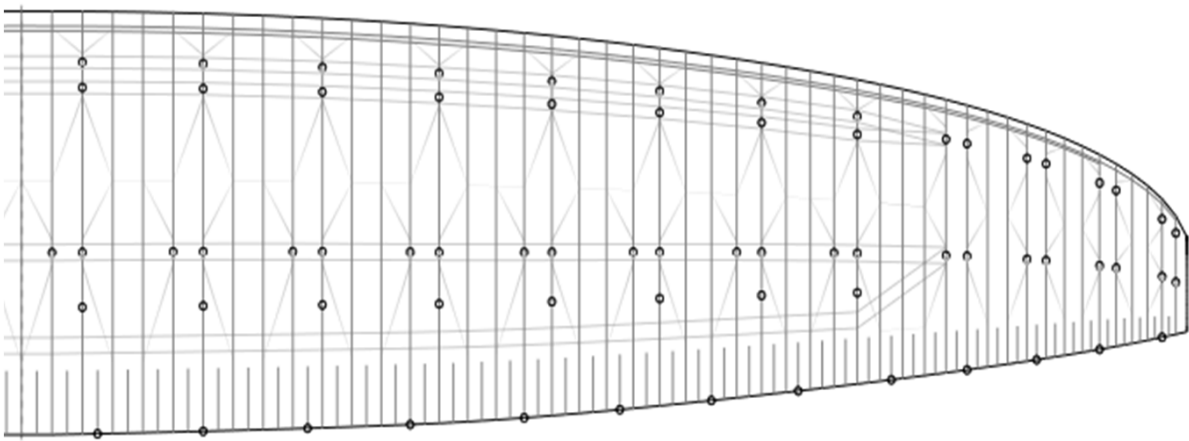
**Table of lines quality**

Upper												
	A1		A2		B		C		BR			
1	Edlerid	8000/U-130	Edlerid	8000/U-090	Edlerid	8000/U-050	Edlerid	9200-030	Edlerid	9200-030		
2	Edlerid	8000/U-070	Edlerid	8000/U-050	Edlerid		Edlerid		Edlerid			
3	Edlerid	8000/U-050	Edlerid		Edlerid		Edlerid		Edlerid			
4	Edlerid	8000/U-070	Edlerid		Edlerid		Edlerid		Edlerid			
5	Edlerid	8000/U-130	Edlerid		Edlerid		Edlerid		Edlerid			
6	Edlerid	8000/U-070	Edlerid		Edlerid		Edlerid		Edlerid			
7	Edlerid	8000/U-050	Edlerid		Edlerid		Edlerid		Edlerid			
8	Edlerid	8000/U-070	Edlerid		Edlerid		Edlerid		Edlerid			
9	Edlerid	8000/U-050			8000/U-050							
10	Edlerid										Edlerid	Edlerid
11	Edlerid										Edlerid	Edlerid
12	Edlerid										Edlerid	Edlerid
13	Edlerid										Edlerid	Edlerid
14	Edlerid										Edlerid	Edlerid
15	Edlerid	9200-030										
16	Edlerid										Edlerid	Edlerid
17												
18												
19												
20												
21												
22												
23												
24						9200-030						
H/middle												
	A				B				BR H/Middle			
1	Edlerid	8000/U-190			Edlerid	8000/U-050			Edlerid	9200-030		
2	Edlerid	8000/U-130			Edlerid		Edlerid					
3	Edlerid	8000/U-090			Edlerid		Edlerid					
4	Edlerid	8000/U-130			Edlerid		Edlerid					
5	Edlerid	8000/U-190			Edlerid		Edlerid					
6	Edlerid	8000/U-130			Edlerid		Edlerid					
7	Edlerid	8000/U-090			Edlerid		Edlerid					
8	Edlerid	8000/U-130			Edlerid		Edlerid					
9	Edlerid	8000/U-090			Edlerid		Edlerid					
10	Edlerid	8000/U-070			Edlerid		Edlerid					
11	Edlerid	8000/U-050			Edlerid		Edlerid					
12					Edlerid	9200-030						
Middle												
	A				B				BR L/Middle			
1	Edlerid	8000/U-230			Edlerid	8000/U-130			Edlerid	8000/U-050		
2	Edlerid	8000/U-190			Edlerid	8000/U-090			Edlerid			
3	Edlerid	8000/U-230			Edlerid	8000/U-130			Edlerid			
4	Edlerid	8000/U-190			Edlerid	8000/U-130			Edlerid			
5	Edlerid	8000/U-130			Edlerid	8000/U-090						
6					Edlerid	8000/U-050						
7					Edlerid	8000/U-050						
L/Middle												
					B							
1					Edlerid	8000/U-130						
2					Edlerid	8000/U-090						
Main												
	A				B				BR H/Main			
1	Edlerid	8000/U-360			Edlerid	8000/U-190			Edlerid	8000/U-090		
2	Edlerid	8000/U-360			Edlerid	8000/U-190			<b>BR L/Main</b>			
3	Edlerid	8000/U-190			Edlerid	8000/U-050			Liros	PPSL160		
<b>STB H/Main</b>	Edlerid	8000/U-050										
<b>STB L/Main</b>	Liros	DSL70										

Upper and lower line loop reinforcement: all Edlerid 8000 lines have upper and lower reinforcement

Other pictures & drawings requested from test House

Diagonals, Hstraps and Mini Ribs (top view)



Diagonals (Front view)

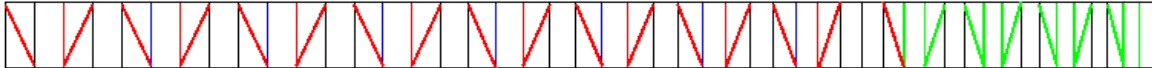
Diagonal 1(A)

01 02 03 04 05 06 07 08 09 10 11 12 13 14 15 16 17 18 19 20 21 22 23 24 25 26 27 28 29 30 31 32 33 34 35 36 37 38 39 40 41 42 43 44 45 46 47 48 49



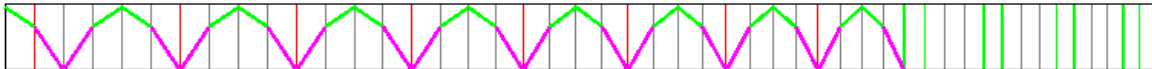
Diagonal 1(B) 위치

01 02 03 04 05 06 07 08 09 10 11 12 13 14 15 16 17 18 19 20 21 22 23 24 25 26 27 28 29 30 31 32 33 34 35 36 37 38 39 40 41 42 43 44 45 46 47 48 49



Diagonal 2

01 02 03 04 05 06 07 08 09 10 11 12 13 14 15 16 17 18 19 20 21 22 23 24 25 26 27 28 29 30 31 32 33 34 35 36 37 38 39 40 41 42 43 44 45 46 47 48 49



Vent (Inlet) shape

