



# MEASUREMENT CCC CERTIFICATION

2015 Edition | Revision 3.5 | SEPT 2014

CCC-002

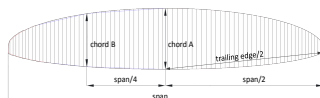
Responsible: Gilles Berruex

Brand: Ozone Gliders | Model: Enzo 2 | Size: L | PR3-P-17C-008 | DATE: 13.10.2014

## Canopy dimensions

	RIB nb from center	Measure mm	Tension	Tolerances
Full Span		13946	3KG	2%
1/2 Trailing Edge		7235	3KG	1%
Chord A	1	2372	3KG	1%
Chord B	24	1977	3KG	1%

Aspect ratio
4*span / (chord A+2.5*Chord B)
7,63

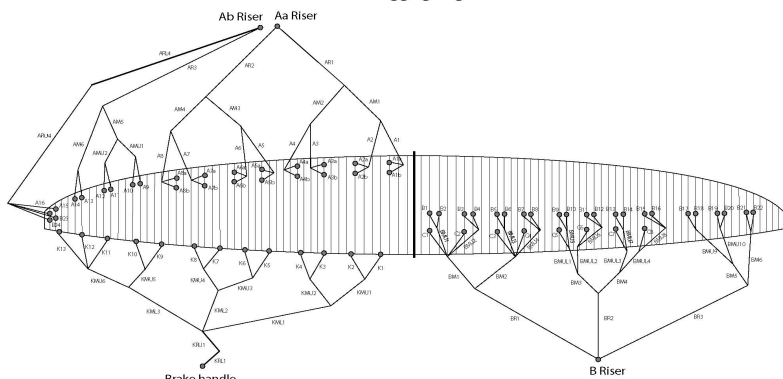


Chord length, inlet position, tabs position measured from trailing edge. (The tab A & B & C can be on different rib, take care to specify it)

First fully lined RIB of group 1 (from center)				
	Rib n°	Distance	Tension	Tolerances
Chord	3	2341	3KG	+/-10mm
Top of inlet	3	2231	3KG	+/-10mm
Bottom of inlet	3	2205	3KG	+/-10mm
Tab Aa	3	1996	3KG	+/-10mm
Tab Ab	3	1762	3KG	+/-10mm
Tab B	3	1019	3KG	+/-10mm
Tab C	2	723	3KG	+/-10mm

First fully lined RIB of group 2 (from center)				Last lined rib (stabilo) (from center)				
	Rib n°	Distance	Tension	Tolerances	Rib n°	Distance	Tension	Tolerances
Chord	24	1977	3KG	+/-10mm	49	557	3KG	+/-10mm
Top of inlet	24	1889	3KG	+/-10mm	49	476	3KG	+/-10mm
Bottom of inlet	24	1868	3KG	+/-10mm	49	338	3KG	+/-10mm
Tab Aa	24	1685	3KG	+/-10mm				
Tab Ab	24	1600	3KG	+/-10mm				
Tab B	24	865	3KG	+/-10mm				
Tab C	23	615	3KG	+/-10mm				

Enzo 2 Rigging diagram



Absolute line length from bottom riser to canopy  
ABSOLUTE LINE LENGTH

Center	Manual		Diff	Glider		Diff	Manual		Diff	Glider		Diff	Manual	Glider	Diff	Manual	Glider	Diff	Manual	Glider	Diff	
	A	A'		B	B'		Stabilo	tot brake line		FL												
1	8671	8681	10	8655	8662	7	8700	8693	-7	8787	8783	-4	0	9079	9089	10	8540					
2	8554	8563	9	8537	8545	8	8642	8640	-2	8629	8628	-1	0	8803	8813	10	8434					
3	8526	8532	6	8510	8517	7	8536	8535	-1	8586	8583	-3	0	8602	8611	9	8313					
4	8592	8599	7	8578	8585	7	8528	8522	-6	8598	8596	-2	0	8529	8537	8	8259					
5	8446	8452	6	8433	8441	8	8502	8496	-6	8553	8543	-10	0	8353	8358	5	8267					
6	8297	8307	10	8284	8294	10	8490	8488	-2	8373	8366	-7		8177	8184	7	8135					
7	8226	8233	7	8216	8224	8	8530	8527	-3	8301	8292	-9		8121	8128	7	8061					
8	8257	8263	6	8249	8259	10	8551	8547	-4	8284	8274	-10		8188	8194	6	7976					
9	7997	8002	5				8486	8479	-7					8084	8086	2	7903					
10	7951	7954	3				8427	8421	-6					8026	8029	3	7883					
11	7857	7859	2				8309	8304	-5					8073	8078	5	7675					
12	7855	7857	2				8299	8296	-3					8257	8261	4	7608					
13	7796	7797	1				8242	8235	-7					8531	8537	6	7501					
14	7802	7802	0				8224	8234	10												7387	
15	7668	7669	1				8241	8248	7												7360	
16	7646	7647	1				8260	8250	-10													
17							8001	7995	-6													CL
18							7958	7951	-7													8692
19							7873	7868	-5													8722
20							7875	7869	-6													
21							7814	7812	-2													Risers FL
22							7825	7821	-4													565
23							7657	7660	3													

Risers: A'

7659	7660	1
------	------	---

**Riser length Manual**

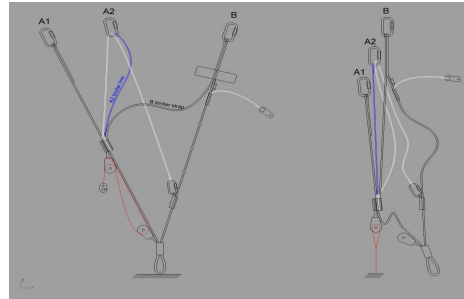
	A	A'	B	B'	calculated Δt	Tension	Tolerances	Attachment rod diameter in mm
Neutral	529	521	515		14	5KG	+/-5mm	5

Full speed setting	Tolerances	Full speed setting	Tolerances	Total speed Range (ΔB+Δt)	
A-A	55 +/-5mm	B-A'	56 +/-5mm	125	+/-5mm
B-A	111 +/-5mm				

**Riser length Gliders**

	A	A'	B	calculated Δt	Tension	Tolerances	Attachment rod diameter in mm
Neutral	530	520	516	14	5KG	+/-5mm	6

Full speed setting	Tolerances	Full speed setting	Tolerances	Total speed Range (ΔB+Δt)	
A-A'	56 +/-5mm	A'-B	55 +/-5mm	126	+/-5mm
A-B	112 +/-5mm				



para-test.com



paragliding by air turquoise

Air Turquoise SA  
Rte du Pré-au-Comte 8 | CH-1844 Villeneuve  
tel. +41 21 965 65 65 | mobile +41 79 202 52 30  
info@para-test.com

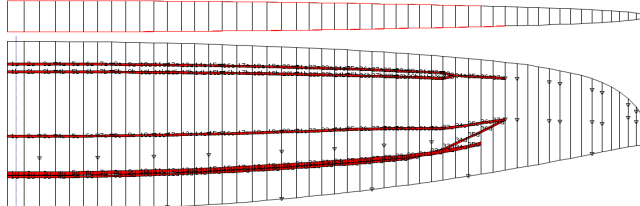
**MEASUREMENT CCC CERTIFICATION**

2015 Edition | Revision 3.5 | SEPT 2014

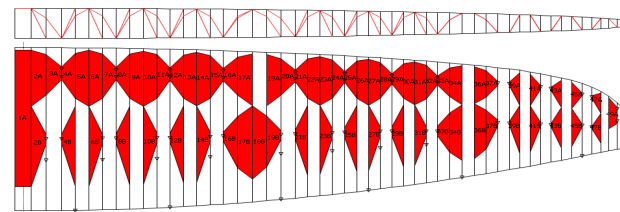
Brand	Ozone Gliders	Model	Enzo 2	Size	L	PR3-P-17C-008	DATE	13.10.2014
-------	---------------	-------	--------	------	---	---------------	------	------------

**Drawings**

**Tension bands**



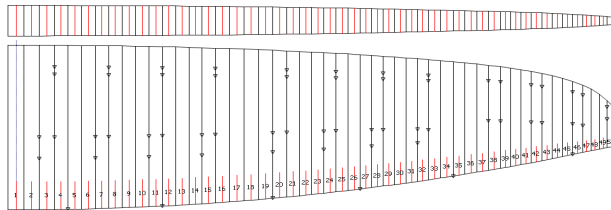
**Diagonals and internal structure**



**Inlet shape**



**Mini rib position**



**Table of lines quality**

**Suspension line details**

Enzo2 L final CCC

Line and splice details	0000U-050	Splice Type	Loop Length	non sewed Len	Sewed Length	non Sewed Len	Total splice length (including Loop)
Edeirid - Red	bbHPP B		20	15	15	30	80 mm
No reinforcement in loops + Diagonal cut							

Lines concens special comment

- C2
- C3
- C4
- C1
- BM6
- A13
- A10, A14
- A12
- A11

ARU4  
 B7  
 B21  
 B18  
 B22  
 B8  
 B15  
 B10  
 B14  
 B19, B16  
 B20  
 B17  
 B13  
 B6  
 B12  
 B5  
 B2  
 B11  
 B9  
 B4  
 B1  
 B3  
 C8  
 BMU10  
 C7  
 C6  
 BMU9  
 C5

Line and slice details	8000U-050	Splice Type	Loop Length	non sewed Len	Sewed Length	non Sewed Len	Total splice length (Including Loop)
Edelrid - Red	bbHPP B	20	15	15	30	80 mm	
<i>Reinforced with 8000-50 inside the loop + Diagonal cut</i>							

Lines concern special comment

BM5  
 AM6  
 A9  
 KML2  
 KML3  
 KML1  
 AMU2  
 BMU6  
 BMU5  
 BMU2  
 BMU3  
 BMU1  
 BMU4  
 BMUL1, BMUL2, BMUL3  
 BMU8  
 BMU7, BMUL4  
 BR3

red sleeve on riser loop + loop on maillon

Line and slice details	8000U-70	Splice Type	Loop Length	non sewed Len	Sewed Length	non Sewed Len	Total splice length (Including Loop)
Edelrid - Red	bbHPP B	20	15	15	30	80 mm	
<i>Reinforced with 8000-50 inside the loop + Diagonal cut</i>							

Lines concern special comment

A6b, A8b  
 A7b  
 A8a  
 A7a, A6a  
 AMU1  
 A8

para-test.com



paragliding by air turquoise

Air Turquoise SA  
 Rte du Pré-au-Comte 8 | CH-1844 Villeneuve  
 tel. +41 21 965 65 65 | mobile +41 79 202 52 30  
 info@para-test.com

# MEASUREMENT CCC CERTIFICATION

2015 Edition | Revision 3.5 | SEPT 2014

Brand	Ozone Gliders	Model	Enzo 2	Size	L	PR3-P-17C-008	DATE	13.10.2014
-------	---------------	-------	--------	------	---	---------------	------	------------

## Table of lines quality

### Suspension line details

Enzo2 L final CCC

Line and slice details	8000U-90	Splice Type	Loop Length	non sewed Len	Sewed Length	non Sewed Len	Total splice length (Including Loop)
Edelrid - Red	bbHPP B	20	15	15	30	80 mm	
<i>Reinforced with 8000-70 inside the loop + Diagonal cut</i>							

Lines concern special comment

A2b  
 A5b  
 A1b  
 A3b  
 A5a  
 A2a  
 A1a  
 A3a  
 A7  
 KRU  
 BM4  
 BM3  
 A4b  
 A4a

Line and slice details	8000U-130	Splice Type	Loop Length	non sewed Len	Sewed Length	non Sewed Len	Total splice length (Including Loop)
------------------------	-----------	-------------	-------------	---------------	--------------	---------------	--------------------------------------

Edeirid - Red	bbHPP A	20	25	15	50	110 mm
Reinforced with 8000-90 inside the loop						+ Diagonal cut

Lines concern special comment

AM4  
AM5  
AM5  
A5  
A3  
A2  
A4  
A1  
BM2  
BM1

Line and slice detail	8000U-190	Splice Type	Loop Length	non sewed Len	Sewed Length	non Sewed Len	Total splice length (Including Loop)
Edeirid - Red	bbHPP A		20	25	15	50	110 mm
Reinforced with 8000-130 inside the loop						+ Diagonal cut	

Lines concern special comment

AM3  
AR3 red sleeve on riser loop  
BR1 red sleeve on riser loop + loop on maillon  
BR2 red sleeve on riser loop + loop on maillon

Line and slice detail	8000U-230	Splice Type	Loop Length	non sewed Len	Sewed Length	non Sewed Len	Total splice length (Including Loop)
Edeirid - Red	bbHPP A		20	25	15	50	110 mm
Reinforced with 8000-190 inside the loop						+ Diagonal cut	

Lines concern special comment

AM1, AM2

Line and slice detail	8000U-360	Splice Type	Loop Length	non sewed Len	Sewed Length	non Sewed Len	Total splice length (Including Loop)
Name	bbHPP A		20	25	15	50	110 mm
Reinforced with 8000-230 inside the loop						+ Diagonal cut	

Lines concern special comment

AR2 red sleeve on riser loop

Line and slice detail	8000U-470	Splice Type	Loop Length	non sewed Len	Sewed Length	non Sewed Len	Total splice length (Including Loop)
Name	bbHPP A		20	25	15	50	110 mm
Reinforced with 8000-230 inside the loop						+ Diagonal cut	

Lines concern special comment

AR1 red sleeve on riser loop

Line and slice detail	A-9000-030	Splice Type	Loop Length	non sewed Len	Sewed Length	non Sewed Len	Total splice length (Including Loop)
Edeirid - Ora	bbHPP A		20	25	15	50	110 mm
No reinforcement in loop						+ Diagonal cut	

Lines concern on glider:

K6  
K7  
K2  
A16  
K10  
B29  
B24  
A15  
K8  
K9  
K4  
K11  
K5  
K3  
K1  
K12  
K13

Line and slice detail	A-9000-030	Splice Type	Loop Length	non sewed Len	Sewed Length	non Sewed Len	Total splice length (Including Loop)
Edeirid - Ora	bbHPP A		20	25	15	50	110 mm
Reinforced with A-9000-030 inside the loop						+ Diagonal cut	

Lines concern special comment

KMU6  
KMU5  
KMU2  
KMU4  
KMU3  
KMU1

Line and slice detail	DSL 140 - LInSewn
-----------------------	-------------------

Lines concern on glider:

ARL4

Line and slice detail	DSL 140 - LInSewn
-----------------------	-------------------

Lines concern on glider:

KRL