

MEASUREMENT CCC CERTIFICATION

2015 Edition | Revision 3.5 | SEPT 2014

CCC_001

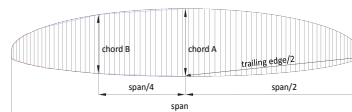
Responsible: Gilles Berruex

Brand	Ozone Gliders	Model	Enzo 2	Size	XS	PR3-P-21E-001	DATE	13.10.2014
-------	---------------	-------	--------	------	----	---------------	------	------------

Canopy dimensions

	RIB nb from center	Measure mm	Tension	Tolerances
Full Span		12339	3KG	2%
1/2 Trailing Edge		6275	3KG	1%
Chord A	1	2121	3KG	1%
Chord B	24	1760	3KG	1%

Aspect ratio $4 \cdot \text{span} / (\text{chord A} + 2.5 \cdot \text{Chord B})$ 7,57



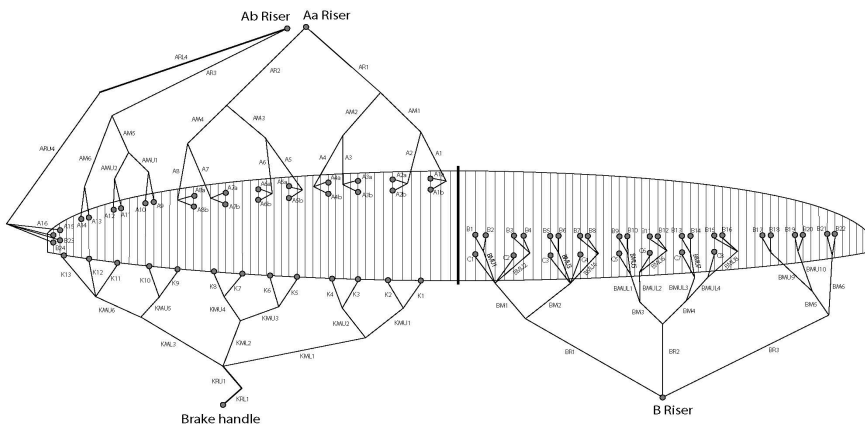
Chord length, inlet position, tabs position measured from trailing edge. (The tab A & B & C can be on different rib, take care to specify it)

First fully lined RIB of group 1 (from center)				
Chord	Rib n°	Distance	Tension	Tolerances
	3	2101	3KG	+/-10mm
Top of inlet	3	1985	3KG	+/-10mm
Bottom of inlet	3	1963	3KG	+/-10mm
Tab Aa	3	1772	3KG	+/-10mm
Tab Ab	3	1690	3KG	+/-10mm
Tab B	3	892	3KG	+/-10mm
Tab C	2	642	3KG	+/-10mm

First fully lined RIB of group 2 (from center)				
Chord	Rib n°	Distance	Tension	Tolerances
	24	1760	3KG	+/-10mm
Top of inlet	24	1663	3KG	+/-10mm
Bottom of inlet	24	1642	3KG	+/-10mm
Tab Aa	24	1484	3KG	+/-10mm
Tab Ab	24	1412	3KG	+/-10mm
Tab B	24	764	3KG	+/-10mm
Tab C	23	545	3KG	+/-10mm

Last lined rib (stabilo) (from center)				
Chord	Rib n°	Distance	Tension	Tolerances
	49	470	3KG	+/-10mm
Top of inlet	49	400	3KG	+/-10mm
Bottom of inlet	49	285	3KG	+/-10mm

Enzo 2 Rigging diagram



Absolute line length from bottom riser to canopy
ABSOLUTE LINE LENGTH

Center		Manual		Glider		Diff	Manual		Glider		Diff	Manual		Glider		Diff	Manual		Glider		Diff	Glider FL
		A		A'			B		Stabilo			tot brake line										
	1	7711	7719	8	7698	7707	9	7736	7737	1	7810	7810	0			0	8062	8068	6	7577		
	2	7607	7617	10	7593	7599	6	7685	7688	3	7665	7663	2			0	7812	7820	8	7563		
	3	7581	7588	7	7568	7571	3	7587	7589	2	7627	7626	1			0	7627	7635	8	7579		
	4	7641	7648	7	7629	7634	5	7580	7579	-1	7639	7636	3			0	7563	7573	10	7439		
	5	7511	7518	7	7500	7506	6	7558	7558	0	7599	7601	-2			0	7405	7412	7	7331		
	6	7378	7384	6	7368	7371	3	7547	7553	6	7436	7437	-1				7246	7253	7	7278		
	7	7317	7327	10	7308	7313	5	7579	7583	4	7374	7366	8				7196	7201	5	7295		
	8	7348	7353	5	7341	7344	3	7600	7599	-1	7361	7353	8				7263	7270	7	7234		
	9	7112	7120	8				7537	7534	-3							7167	7174	7	7120		
	10	7071	7077	6				7486	7486	0							7116	7123	7	7011		
	11	6991	7001	10				7380	7378	-2							7154	7158	4	6947		
	12	6992	7000	8				7373	7372	-1							7322	7327	5	6940		
	13	6938	6942	4				7321	7315	-6							7572	7578	6	6839		

14	6946	6950	4
15	6833	6836	3
16	6814	6818	4
17			
18			
19			
20			
21			
22			
23			
24			

Risers : **A'**

7306	7300	-6
7323	7316	-7
7342	7334	-8
7102	7099	-3
7064	7063	-1
6994	6994	0
6998	6999	1
6943	6940	-3
6953	6950	-3
6822	6824	2
6827	6830	3

6726
6635
6552
6547
CL
7565
7578
Risers FL
645

Wing tip

Riser length Manual

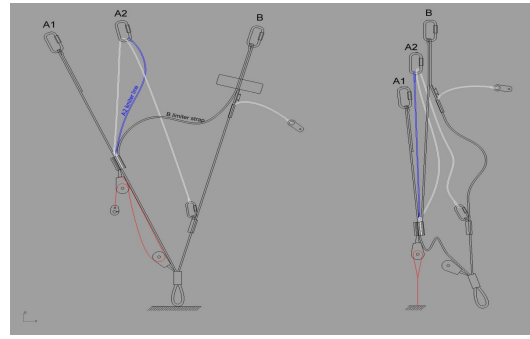
	A	A'	B	B'	calculated Δt	Tension	Tolerances	Attachment rod diameter in mm
Neutral	529	521	515		14	5KG	+/-5mm	5

Full speed setting	Tolerances	Full speed setting	Tolerances	Total speed Range ($\Delta a + \Delta t$)
A'-A	51 +/-5mm	B-A'	52 +/-5mm	117 +/-5mm
B-A	103 +/-5mm			

Riser length Gliders

	A	A'	B	B'	calculated Δt	Tension	Tolerances	Attachment rod diameter in mm
Neutral	530	521	516		14	5KG	+/-5mm	6

Full speed setting	Tolerances	Full speed setting	Tolerances	Total speed Range ($\Delta a + \Delta t$)
A'-A'	51 +/-5mm	A'-B	53 +/-5mm	118 +/-5mm
A-B	104 +/-5mm			



para-test.com



paragliding by air turquoise

Air Turquoise SA
Rte du Pré-au-Comte 8 | CH-1844 Villeneuve
tel. +41 21 965 65 65 | mobile +41 79 202 52 30
info@para-test.com

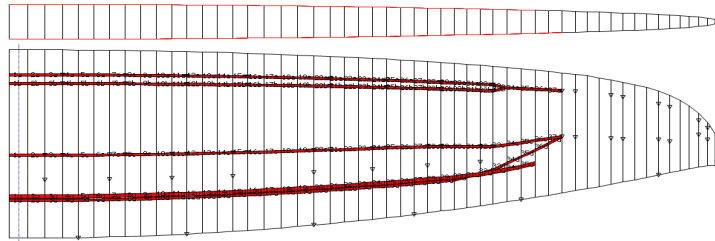
MEASUREMENT CCC CERTIFICATION

2015 Edition | Revision 3.5 | SEPT 2014

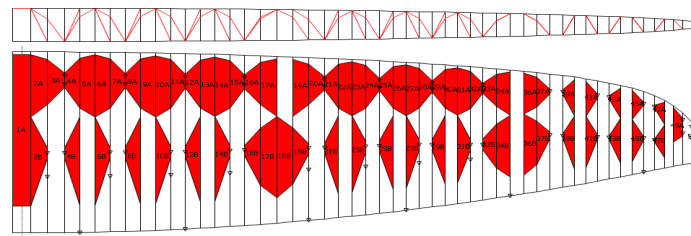
Responsible: **Gilles Berruex**

Brand: Ozone Gliders | Model: Enzo 2 | Size: XS | PR3-P-21E-001 | DATE: 13.10.2014

Drawings
Tension bands



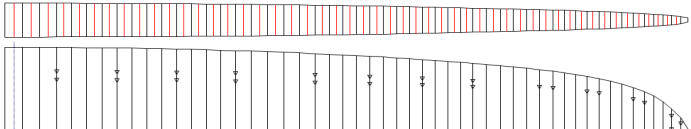
Diagonals and internal structure



Inlet shape



Mini rib position



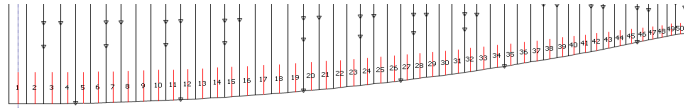


Table of lines quality

Suspension line details

Prototype Enzo2 XS lines - 18/9/2014

8000U-050								
Name	No.	Sewn	Splice Type	Loop Length	non sewed Le	Sewed Length	non Sewed L _e	Total splice length (Including Loop)
			bbHPP B	20	15	15	30	80 mm
			<i>No reinforcement in loops</i>				+ Diagonal cut	
A13	2	142						
A14	2	150						
C3	2	1330						
C4	2	1342						
C1	2	1467						
C2	2	1322						
C5	2	804						
C7	2	605						
C6	2	641						
C8	2	547						
BMU10	2	580						
BM6	2	1306						
B1	2	207						
B2	2	156						
B3	2	209						
B4	2	202						
BMU9	2	650						
B21	2	137						
B14	2	138						
B15	2	139						
B6, B19	4	141						
B10	2	142						
B7, B18	4	143						
B20	2	145						
B22	2	147						
B5	2	152						
B13	2	153						
B12	2	154						
B16	2	158						
B11	2	161						
B8	2	164						
B17	2	181						
B9	2	193						
A10	2	139						
A11	2	143						
A12	2	144						
ARU4	2	5381						

8000U-050								
Name	No.	Sewn	Splice Type	Loop Length	non sewed Le	Sewed Length	non Sewed L _e	Total splice length (Including Loop)
			bbHPP B	20	15	15	30	80 mm
			<i>Reinforced with 8000-50 inside the loop</i>				+ Diagonal cut	
A9	2	180						
AMU2	2	605						
AM6	2	1370						
KML2	2	2256						
KML3	2	2419						
KML1	2	2520						
BMUL1, BMUL2	4	371						
BMUL3	2	376						
BMU8	2	370						
BMU7	2	400						
BMUL4	2	422						
BMU6	2	425						
BMU5	2	550						
BM5	2	773						
BMU2	2	1036						
BMU3	2	1110						
BMU4	2	1140						
BMU1	2	1187						
BR3	2	4981						
			<i>red sleeve on riser loop + loop on maillon</i>					

8000U-070								
Name	No.	Sewn	Splice Type	Loop Length	non sewed Le	Sewed Length	non Sewed L _e	Total splice length (Including Loop)
			bbHPP B	20	15	15	30	80 mm
			<i>Reinforced with 8000-50 inside the loop</i>				+ Diagonal cut	
A6b	2	140						
A7b	2	143						
A8b	2	144						
A6a	2	155						
A8a	2	156						
A7a	2	157						
AMU1	2	690						
A7	2	906						
A8	2	938						
BM4	2	828						
BM3	2	860						
BM2	2	925						

MEASUREMENT CCC CERTIFICATION

2015 Edition | Revision 3.5 | SEPT 2014

Responsible: Gilles Berruex

Brand: Ozone Gliders Model: Enzo 2 Size: XS PR3-P-21E-001 DATE: 13.10.2014

8000U-090		Splice Type	Loop Length	non sewed Le	Sewed Length	non Sewed L _e	Total splice length (Including Loop)
Name	No.	Sewn	bbHPP B	20	15	15	30
A2b	2	139	Reinforced with 8000-70 inside the loop				80 mm
A3b	2	143					+ Diagonal cut
A1b	2	144					
A5b	2	146					
A2a	2	158					
A3a	2	161					
A5a, A1a	4	162					
A6	2	814					
AM5	2	823					
A5	2	940					
KRU	2	2404					
BM1	2	971					
A4b	2	150					
A4a	2	167					

8000U-130		Splice Type	Loop Length	non sewed Le	Sewed Length	non Sewed L _e	Total splice length (Including Loop)
Name	No.	Sewn	bbHPP A	20	25	15	50
AM4	2	629	Reinforced with 8000-90 inside the loop				110 mm
A3	2	1008					+ Diagonal cut
A2	2	1036					
A4	2	1063					
A1	2	1135					
AR3	2	4894	red sleeve on riser loop				
BR1	2	4862	red sleeve on riser loop + loop on maillon				
BR2	2	5053	red sleeve on riser loop + loop on maillon				

8000U-190		Splice Type	Loop Length	non sewed Le	Sewed Length	non Sewed L _e	Total splice length (Including Loop)
Name	No.	Sewn	bbHPP A	20	25	15	50
AM3	2	786	Reinforced with 8000-130 inside the loop				110 mm
AM1, AM2	4	925					+ Diagonal cut

8000U-360		Splice Type	Loop Length	non sewed Le	Sewed Length	non Sewed L _e	Total splice length (Including Loop)
Name	No.	Sewn	bbHPP A	20	25	15	50
AR1	2	4968	red sleeve on Reinforced with 8000-230 inside the loop				110 mm
AR2	2	5100	red sleeve on riser loop				+ Diagonal cut

A-9000-030		Splice Type	Loop Length	non sewed Le	Sewed Length	non Sewed L _e	Total splice length (Including Loop)
Name	No.	Sewn	bbHPP A	20	25	15	50
K6	2	315	No reinforcement in loop				110 mm
K7	2	312					+ Diagonal cut
K2	2	328					
A16	2	352					
B23	2	361					
K10	2	342					
B24	2	366					
A15	2	371					
K8	2	379					
K9	2	393					
K4, K11	4	433					
K5	2	474					
K3	2	497					
K1	2	578					
K12	2	601					
K13	2	851					

A-9000-030		Splice Type	Loop Length	non sewed Le	Sewed Length	non Sewed L _e	Total splice length (Including Loop)
Name	No.	Sewn	bbHPP A	20	25	15	50
KMU6	2	664	Reinforced with A-9000-030 inside the loop				110 mm
KMU5	2	717					+ Diagonal cut
KMU2	2	971					
KMU4	2	989					
KMU3	2	1036					
KMU1	2	1325					

DSL 140 red		Splice Type	Loop Length	non sewed Le	Sewed Length	non Sewed L _e	Total splice length (Including Loop)
Name	No.	Sewn					
ARL4	2	555					

DSL140 red		Splice Type	Loop Length	non sewed Le	Sewed Length	non Sewed L _e	Total splice length (Including Loop)
Name	No.	Sewn					
KRL	2	1485					

mark at 1235