



MEASUREMENT CCC CERTIFICATION

2015 Edition | Revision 3.5 | SEPT 2014

CCC_005.2014

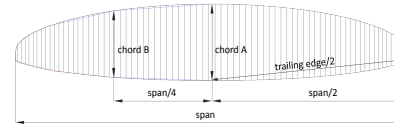
Responsible: Gilles Berruex

Brand: Niviuk Gliders | Model: ICEPEAK 8 | Size: 26 | Serial number: Icepeak 8 7-26 pattern v1 | DATE: 15.10.2014

Canopy dimensions

	RIB nb from center	Measure mm	Tension	Tolerances
Full Span		13607	3KG	2%
1/2 Trailing Edge		6889	3KG	1%
Chord A	1	2325	3KG	1%
Chord B	21	2061	3KG	1%

Aspect ratio
4*span / (chord A+2.5*Chord B)
7,28



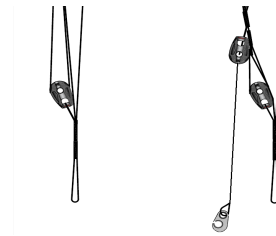
Chord length, inlet position, tabs position measured from trailing edge. (The tab A & B & C can be on different rib, take care to specify it)

First fully lined RIB of group 1 (from center)				
	Rib n°	Distance	Tension	Tolerances
Chord	3	2309	3KG	+/-10mm
Top of inlet	3	2204	3KG	+/-10mm
Bottom of inlet	3	2181	3KG	+/-10mm
Tab Aa	3	1979	3KG	+/-10mm
Tab Ab	3	1878	3KG	+/-10mm
Tab B	3	1000	3KG	+/-10mm
Tab C	3	715	3KG	+/-10mm

First fully lined RIB of group 2 (from center)				
	Rib n°	Distance	Tension	Tolerances
Chord	20	2065	3KG	+/-10mm
Top of inlet	20	1967	3KG	+/-10mm
Bottom of inlet	20	1947	3KG	+/-10mm
Tab Aa	20	1770	3KG	+/-10mm
Tab Ab	20	1678	3KG	+/-10mm
Tab B	20	925	3KG	+/-10mm
Tab C	20	660	3KG	+/-10mm

Last lined rib (stabilo) (from center)				
	Rib n°	Distance	Tension	Tolerances
Chord	49	515	3KG	+/-10mm
Tab A	49	440	3KG	+/-10mm
Tab B	49	225	3KG	+/-10mm

Neutral	526	526	526		0	5KG	+/-5mm	6	
Full speed setting		Tolerances		Full speed setting		Tolerances		Total speed Range ($\Delta a + \Delta t$)	
A-A'	64	+/-5mm		A'-B	66	+/-5mm		130	+/-5mm
A-B	130	+/-5mm							



para-test.com



paragliding by air turquoise

Air Turquoise SA
 Rte du Pré-au-Comte 8 | CH-1844 Villeneuve
 tel. +41 21 965 65 65 | mobile +41 79 202 52 30
 info@para-test.com

MEASUREMENT CCC CERTIFICATION

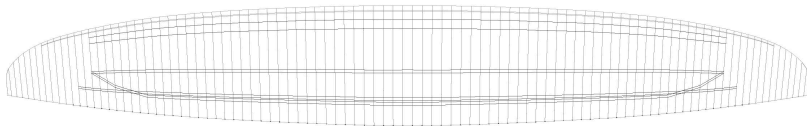
2015 Edition | Revision 3.5 | SEPT 2014

CCC_005.2014

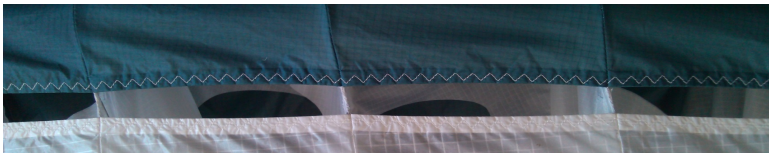
Brand	Niviuk Gliders	Model	Ice Peak Pro 8	Size	26	Serial number	Icepeak 8 7-26 pattern v1	DATE	15.10.2014
-------	----------------	-------	----------------	------	----	---------------	---------------------------	------	------------

Drawings

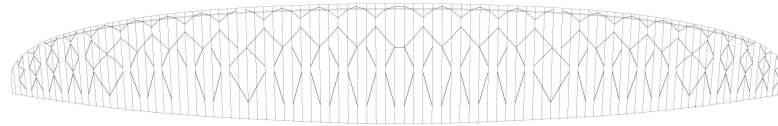
Tension bands



Inlet shape



Diagonals and internal structure



Mini rib position

