



MEASUREMENT CCC CERTIFICATION

2015 Edition | Revision 3.5 | SEPT 2014

CCC_004.2014

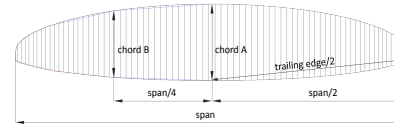
Responsible: Gilles Berruex

Brand: Niviuk Gliders | Model: ICEPEAK 8 | Size: 24 | Serial number: Icepeak 8 7-24 pattern v1 | DATE: 15.10.2014

Canopy dimensions

	RIB nb from center	Measure mm	Tension	Tolerances
Full Span		13185	3KG	2%
1/2 Trailing Edge		6695	3KG	1%
Chord A	1	2254	3KG	1%
Chord B	21	1997	3KG	1%

Aspect ratio
4*span / (chord A+2.5*Chord B)
7,28

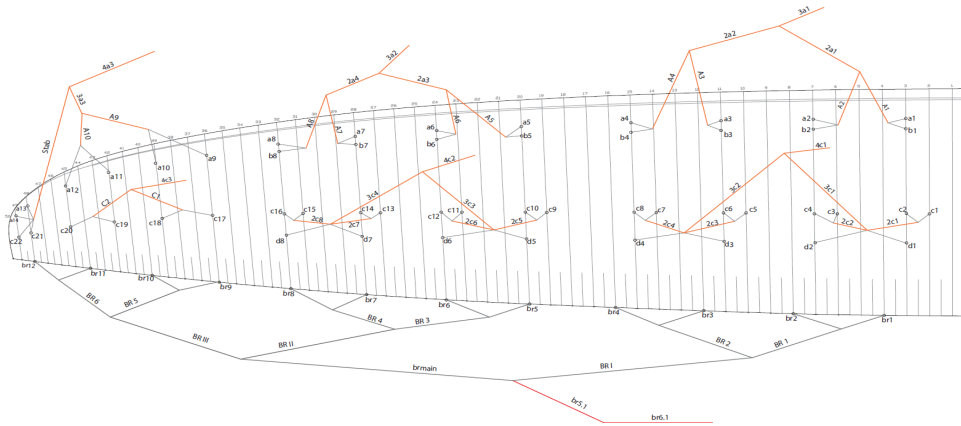


Chord length, inlet position, tabs position measured from trailing edge. (The tab A & B & C can be on different rib, take care to specify it)

First fully lined RIB of group 1 (from center)				
	Rib n°	Distance	Tension	Tolerances
Chord	3	2241	3KG	+/-10mm
Top of inlet	3	2140	3KG	+/-10mm
Bottom of inlet	3	2119	3KG	+/-10mm
Tab Aa	3	1916	3KG	+/-10mm
Tab Ab	3	1794	3KG	+/-10mm
Tab B	3	1005	3KG	+/-10mm
Tab C	3	712	3KG	+/-10mm

First fully lined RIB of group 2 (from center)				
	Rib n°	Distance	Tension	Tolerances
Chord	20	2005	3KG	+/-10mm
Top of inlet	20	1904	3KG	+/-10mm
Bottom of inlet	20	1884	3KG	+/-10mm
Tab Aa	20	1705	3KG	+/-10mm
Tab Ab	20	1623	3KG	+/-10mm
Tab B	20	875	3KG	+/-10mm
Tab C	20	619	3KG	+/-10mm

Last lined rib (stabilo) (from center)				
	Rib n°	Distance	Tension	Tolerances
Chord	49	487	3KG	+/-10mm
Tab A	49	427	3KG	+/-10mm
Tab B	49	222	3KG	+/-10mm



NIVIUK GLIDERS & AIR GAMES S.L. Paraglider & Accessories
 Zona Industrial - C/ Del Ter, 6 - nave D - 17165 La Cellera de Ter - Girona - Spain
 Tel. +34 972 42 28 78 - Fax. +34 972 42 00 86 - info@niviuk.com - www.niviuk.com

ABSOLUTE LINE LENGTH FROM bottom RISER TO CANOPY IN mm

		Manual	Glider	Diff	Manual	Glider	Diff	Manual	Glider	Diff	Manual	Glider	Diff	Manual	Glider	Diff	Manual	Glider	Diff	Glider
		A			A'				B			B'			Stabilo			tot brake line		FL
Center	1	8321	8324	3	8309	8314	5	8360	8365	5	8366	8366	0			0	8661	8654	-7	7906
	2	8190	8193	3	8176	8178	2	8294	8294	0	8245	8246	1			0	8296	8295	-1	7773
	3	8146	8151	5	8132	8138	6	8173	8173	0	8199	8199	0			0	8178	8176	-2	7727
	4	8185	8190	5	8171	8175	4	8169	8172	3	8297	8298	1			0	8281	8281	0	7760
	5	8113	8119	6	8098	8103	5	8140	8144	4	8129	8129	0			0	8124	8124	0	7637
	6	7987	7994	7	7972	7978	6	8124	8128	4	8024	8025	1				7916	7916	0	7509
	7	7927	7928	1	7912	7913	1	8184	8186	2	7967	7968	1				7833	7833	0	7442
	8	7933	7938	5	7921	7921	0	8230	8231	1	8031	8031	0				7924	7927	3	7429
	9	7764	7768	4				8129	8129	0							7827	7829	2	7266
	10	7649	7650	1				8074	8077	3							7796	7797	1	7154
	11	7581	7585	4				7972	7973	1							7921	7922	1	7061
	12	7590	7591	1				7970	7969	-1							8151	8146	-5	7018
	13	7482	7489	7				7932	7935	3									0	7113
	14	7469	7473	4				7917	7917	0									0	
	15							7956	7955	-1										CL
	16							7991	7989	-2										8031
	17							7745	7746	1										
	18							7634	7634	0										RFL
	19							7584	7586	2										791
	20							7625	7625	0										
	21							7483	7486	3										
Wing tip	22							7491	7492	1										

Risers : A'

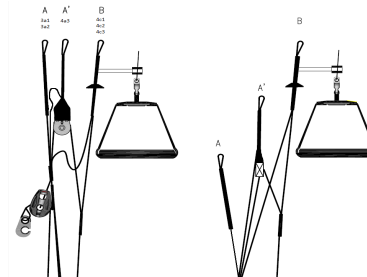
Riser length Manual

	A	A'	B	calculated Δt	Tension	Tolerances	Attachment rod diameter in mm
Neutral	521	520	523	-2	5KG	+/-5mm	6

Full speed setting	Tolerances	Full speed setting	Tolerances	Total speed Range (Δa+Δt)
A-A'	60 +/-5mm	A-B	60 +/-5mm	118 +/-5mm
A-B	120 +/-5mm			

Riser length Gliders

	A	A'	B	calculated Δt	Tension	Tolerances	Attachment rod diameter in mm



Neutral	525	526	526		-1	5KG	+/-5mm	6
Full speed setting		Tolerances		Full speed setting		Tolerances		Total speed Range ($\Delta a + \Delta t$)
A-A'	60	+/-5mm		A-B	62	+/-5mm		121
A-B	122	+/-5mm						+/-5mm



para-test.com



Air Turquoise SA
 Rte du Pré-au-Comte 8 | CH-1844 Villeneuve
 tel. +41 21 965 65 65 | mobile +41 79 202 52 30
 info@para-test.com

MEASUREMENT CCC CERTIFICATION

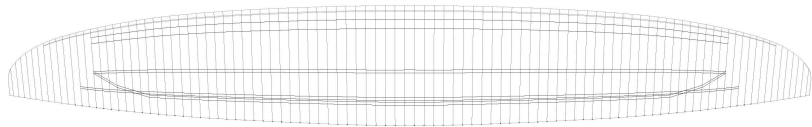
2015 Edition | Revision 3.5 | SEPT 2014

CCC_004.2014

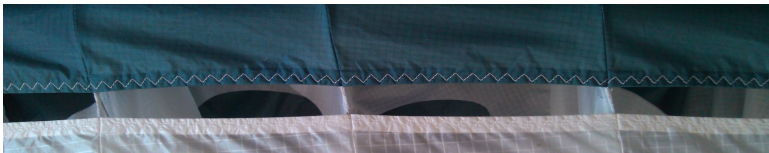
Brand	Niviuk Gliders	Model	Ice Peak Pro 8	Size	24	Serial number	Icepeak 8 7-24 pattern v1	DATE	15.10.2014
-------	----------------	-------	----------------	------	----	---------------	---------------------------	------	------------

Drawings

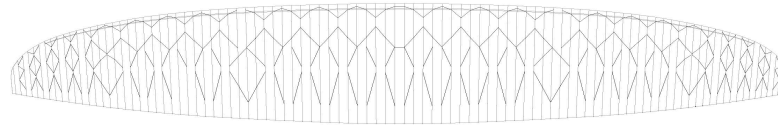
Tension bands



Inlet shape



Diagonals and internal structure



Mini rib position

