



# MEASUREMENT CCC CERTIFICATION

2015 Edition | Revision 3.5 | SEPT 2014

CCC\_003.2014

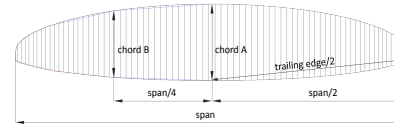
Responsible: Gilles Berruex

Brand: Niviuk Gliders | Model: ICEPEAK 8 | Size: 22 | Serial number: Icepeak 8 7-22 pattern v1 | DATE: 13.10.2014

## Canopy dimensions

	RIB nb from center	Measure mm	Tension	Tolerances
Full Span		12733	3KG	2%
1/2 Trailing Edge		6493	3KG	1%
Chord A	1	2178	3KG	1%
Chord B	21	1926	3KG	1%

Aspect ratio
4*span / (chord A+2.5*Chord B)
7,28

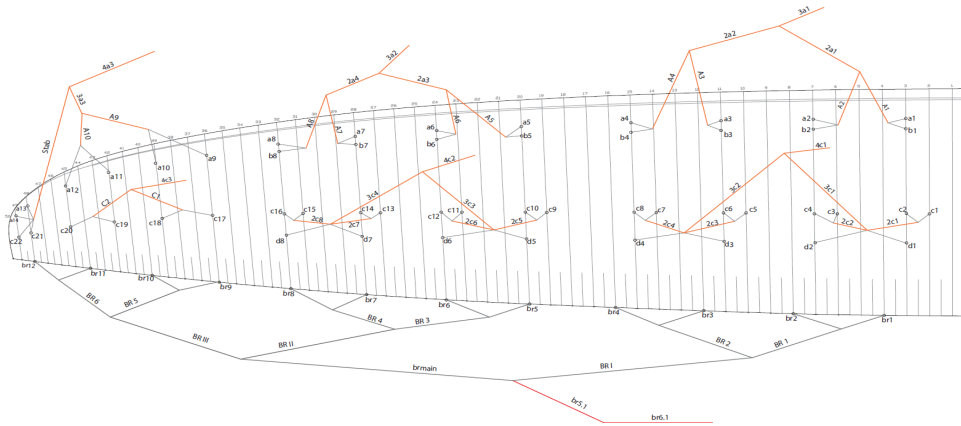


Chord length, inlet position, tabs position measured from trailing edge. (The tab A & B & C can be on different rib, take care to specify it)

First fully lined RIB of group 1 (from center)				
	Rib n°	Distance	Tension	Tolerances
Chord	3	2161	3KG	+/-10mm
Top of inlet	3	2074	3KG	+/-10mm
Bottom of inlet	3	2051	3KG	+/-10mm
Tab Aa	3	1883	3KG	+/-10mm
Tab Ab	3	1762	3KG	+/-10mm
Tab B	3	971	3KG	+/-10mm
Tab C	3	696	3KG	+/-10mm

First fully lined RIB of group 2 (from center)				
	Rib n°	Distance	Tension	Tolerances
Chord	20	1945	3KG	+/-10mm
Top of inlet	20	1864	3KG	+/-10mm
Bottom of inlet	20	1847	3KG	+/-10mm
Tab Aa	20	1678	3KG	+/-10mm
Tab Ab	20	1593	3KG	+/-10mm
Tab B	20	873	3KG	+/-10mm
Tab C	20	633	3KG	+/-10mm

Last lined rib (stabilo) (from center)				
	Rib n°	Distance	Tension	Tolerances
Chord	49	492	3KG	+/-10mm
Tab A	49	411	3KG	+/-10mm
Tab B	49	209	3KG	+/-10mm



NIVIUK GLIDERS & AIR GAMES S.L-Paraglider & Accessories  
 Zona Industrial- C/ Del Ter, 6 - nave D - 17165 La Cellera de Ter - Girona - Spain  
 Tel. +34 972 42 28 78 - Fax. +34 972 42 00 86 - info@niviuk.com - www.niviuk.com

**ABSOLUTE LINE LENGTH FROM bottom RISER TO CANOPY IN mm**

	Manual	Glider	Diff	Manual	Glider	Diff	Manual	Glider	Diff	Manual	Glider	Diff	Manual	Glider	Diff	Manual	Glider	Diff	Glider
	A			A'			B			B'			Stabilo			tot brake line			FL
<b>Center</b>	1	8059	8062	3	8047	8052	5	8094	8097	3	8100	8101	1			8373	8369	-4	7652
	2	7931	7930	-1	7917	7922	5	8030	8033	3	7982	7981	-1			8018	8026	8	7530
	3	7887	7885	-2	7873	7872	-1	7913	7915	2	7937	7942	5			7904	7908	4	7476
	4	7923	7922	-1	7909	7911	2	7908	7911	3	8030	8033	3			8003	8007	4	7509
	5	7847	7843	-4	7837	7832	-5	7879	7882	3	7866	7865	-1		0	7850	7853	3	7433
	6	7725	7721	-4	7715	7708	-7	7864	7866	2	7764	7766	2			7648	7656	8	7309
	7	7667	7664	-3	7657	7652	-5	7921	7926	5	7709	7711	2			7567	7572	5	7240
	8	7672	7665	-7	7666	7657	-9	7964	7969	5	7771	7769	-2			7654	7662	8	7232
	9	7509	7504	-5				7866	7862	-4						7560	7566	6	7074
	10	7398	7390	-8				7812	7811	-1						7529	7535	6	6963
	11	7332	7323	-9				7713	7715	2						7650	7647	-3	6871
	12	7341	7332	-9				7712	7714	2						7873	7867	-6	6829
	13	7237	7237	0				7675	7671	-4								0	6918
	14	7224	7229	5				7660	7658	-2								0	
	15							7698	7699	1									
	16							7731	7729	-2									<b>CL</b>
	17							7494	7493	-1									7817
	18							7387	7386	-1									<b>RFL</b>
	19							7339	7336	-3									693
	20							7379	7371	-8									
	21							7244	7241	-3									
<b>Wing tip</b>	22							7252	7248	-4									

Risers : **A'**

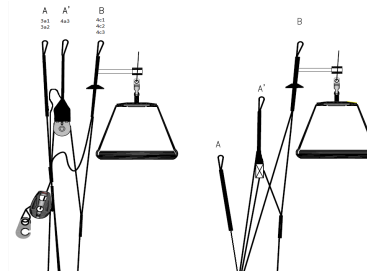
**Riser length Manual**

	A	A'	B	calculated Δt	Tension	Tolerances	Attachment rod diameter in mm
Neutral	522	521	522	0	5KG	+/-5mm	6

Full speed setting	Tolerances
A-A'	60 +/-5mm
A-B	120 +/-5mm

Full speed setting	Tolerances
A'-B	60 +/-5mm

Total speed Range (Δa+Δt)	
120	+/-5mm



**Riser length Gliders**

	A	A'	B			calculated $\Delta t$	Tension	Tolerances	Attachment rod diameter in mm
Neutral	527	527	527			0	5KG	+/-5mm	6

Full speed setting		Tolerances	
A-A'	56	+/-5mm	
A-B	119	+/-5mm	

Full speed setting		Tolerances	
A'-B	62	+/-5mm	

Total speed Range ( $\Delta a + \Delta t$ )		
	119	+/-5mm



para-test.com



Air Turquoise SA  
 Rte du Pré-au-Comte 8 | CH-1844 Villeneuve  
 tel. +41 21 965 65 65 | mobile +41 79 202 52 30  
 info@para-test.com

# MEASUREMENT CCC CERTIFICATION

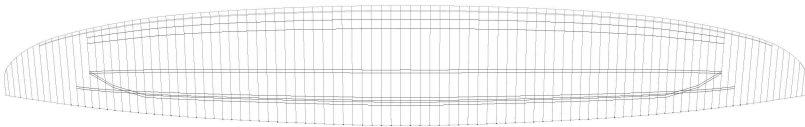
2015 Edition | Revision 3.5 | SEPT 2014

CCC\_003.2014

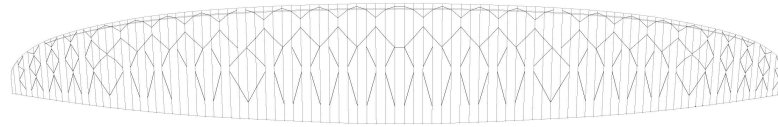
Brand	Niviuk Gliders	Model	Ice Peak Pro 8	Size	22	Serial number	Icepeak 8 7-22 pattern v1	DATE	13.10.2014
-------	----------------	-------	----------------	------	----	---------------	---------------------------	------	------------

## Drawings

### Tension bands



### Diagonals and internal structure



### Inlet shape



### Mini rib position

