

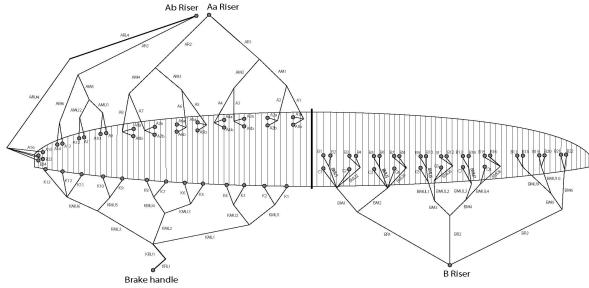
**MEASUREMENT CCC CERTIFICATION**  
**Recognition EN 926-2 | 2005**

2015 Edition | Revision 3.5 | SEPT 2014

CCC-009

Brand	Osprey Gliders	Model	Enzo 2	Size	M	C-48E-002	Responsible	Gilles Bernoux
Certification n°	PG_0860.2014	Certification date	21.3.14	DATE	04.12.2014			

Enzo 2 Rigging diagram



**MEASURE THE LENGTH FROM BOTTOM RISER TO CANOPY**  
**ARROUND THE LINE LENGTH**

	Manual		Glider		Diff	Manual		Glider		Diff	Manual		Glider		Diff
	A	B	A'	B'		A	B	A'	B'		A	B	A'	B'	
1	8368	8388	-8	8343	8363	-10	8374	8374	0						
2	8245	8252	-7	8229	8237	-8	8319	8316	3						
3	8218	8226	-8	8202	8204	-2	8218	8217	1						
4	8282	8290	-8	8268	8274	-6	8211	8212	-1						
5	8143	8151	-8	8130	8137	-7	8186	8189	-3						
6	7998	8008	-10	7986	7995	-9	8175	8178	-3						
7	7932	7941	-9	7921	7929	-8	8217	8220	-3						
8	7963	7971	-8	7956	7964	-8	8236	8238	0						
9	7710	7714	-4				8173	8176	-3						
10	7668	7671	-3				8117	8122	-5						
11	7577	7580	-3				8004	8010	-6						
12	7576	7579	-3				7998	8000	-2						
13	7519	7520	-1				7936	7945	-9						
14	7527	7528	-1				7919	7920	-1						
15	7395	7392	3				7937	7946	-9						
16	7374	7366	8				7956	7962	-6						

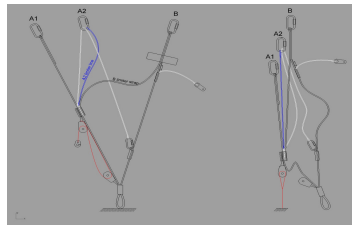
	Manual		Glider		Diff	Manual		Glider		Diff
	B'	B	Stabilo	Stabilo		Diff	tot brake line	Diff		
	8455	8450	5			0	8701	8701	0	
	8302	8299	3			0	8424	8441	-7	
	8262	8260	2			0	8238	8247	-9	
	8275	8276	-1			0	8168	8175	-7	
	8246	8247	-1			0	7999	8002	-3	
	8073	8078	-5				7829	7838	-7	
							7774	7782	-8	
							7640	7641	-1	
							7741	7743	-2	
							7685	7688	-1	
							7729	7728	1	
							7909	7899	9	
							8173	8174	-1	

**Riser length Manual**

	A	A'	B	B'	calculated Δt	Tension	Tolerances	Attachment rod diameter in mm
Neutral	529	521	515		14	5KG	±5mm	5
Full speed setting								
A-A'	65	±5mm						
B-A'	111	±5mm						
Full speed setting								
A-A'	66	±5mm						
B-A'	111	±5mm						
Total speed Range (Δa+Δb)								125 ±5mm

**Riser length Gliders**

	A	A'	B	calculated Δt	Tension	Tolerances	Attachment rod diameter in mm
Neutral	534	527	522	12	5KG	±5mm	6
Full speed setting							
A-A'	68	±5mm					
A-B	114	±5mm					
Full speed setting							
A-B	66	±5mm					
Total speed Range (Δa+Δb)							126 ±5mm



**MEASUREMENT CCC CERTIFICATION**  
**Recognition EN 926-2 | 2005**

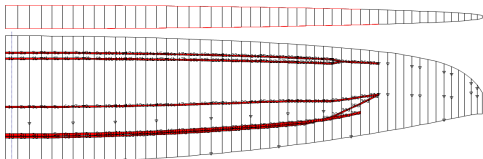
2015 Edition | Revision 3.5 | SEPT 2014

CCC-009

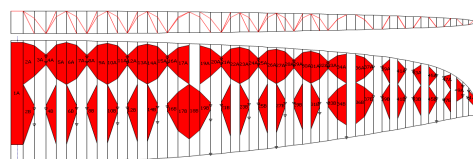
Brand  Model  Size  Responsible  S-4BE-002 DATE

Certification n°  Certification date

**Drawings**  
**Tension bands**



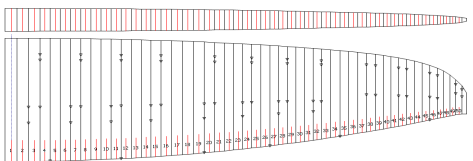
**Diagonals and internal structure**



**Inlet shape**



**Mini rib position**



**Table of lines quality**

**Suspension line details**  
Enzo2 M CCC lines  
22th september 2014

Line and slice details	A-9000-050	Splice Type	Loop Length	non sewed Lo	Sewed Length	not non Sewed Len	Total splice length (including Loop)
Edelrid - Red	bbHPP B	20	15	15	30		80 mm
No reinforcement inside the loop + Diagonal cut							

**Lines concenspecial comment**

- A13
- A14
- B21
- B22
- B46
- B7
- B18
- B15
- B10
- B14
- B19
- B20
- B13
- B6
- B12
- B2
- B11
- B3
- C8
- BMU10
- C7
- C6
- C5
- C2
- C3
- C4
- C1

Line and slice details	A-9000-030	Splice Type	Loop Length	non sewed Lo	Sewed Length	not non Sewed Len	Total splice length (including Loop)
Edelrid - Ora	bbHPP A	20	25	15	50		110 mm
No reinforcement inside the loop + Diagonal cut							

**Lines concenspecial comment**

- B23
- B24
- A16
- A15
- B6
- K7
- K2
- K10
- B8
- K9
- K4
- K11
- K5
- K3
- K1
- K12
- K13

Line and slice details	A-9000-030	Splice Type	Loop Length	non sewed Lo	Sewed Length	not non Sewed Len	Total splice length (including Loop)
Edelrid - Ora	bbHPP A	20	25	15	50		110 mm
Reinforced with A-9000-030 inside the loop + Diagonal cut							

**Lines concenspecial comment**

- KMU2
- KMU4
- KMU3
- KMU1
- KMU6
- KMU5

**MEASUREMENT CCC CERTIFICATION**  
**Recognition EN 926-2 | 2005**

2015 Edition | Revision 3.5 | SEPT 2014

CCC-009

Brand	Ozone Gliders	Model	Enzo 2	Size	M	Reference	548E-002	Responsible	Giles Bernoux
Certification n°	PG_0850_2014	Certification date	21.3.14	DATE	04.12.2014				

Line and slice details	Splice Type	Loop Length	non sewed Lc	Sewed Length	not non Sewed Len	Total splice length (Including Loop)
Edging - Red	bbPPP B	20	45	15	30	80 mm
Reinforced with 8000-50 inside the loop + Diagonal cut						

Lines concerned comment

- A10
  - A12
  - A11
  - A9
  - AMU2
  - AM6
  - KML2
  - KML3
  - KML1
  - ARU4
  - B8
  - B19
  - B17
  - B5
  - B9
  - B4
  - B1
  - BMU11
  - BMU12
  - BMU13
  - BMU8
  - BMU14
  - BMU7
  - BMU6
  - BMU5
  - BMU9
  - BM5
  - BMU2
  - BMU3
  - BMU1
  - BMU4
  - BS3
- million side loop + loop around the maillon (see picture)

Line and slice details	Splice Type	Loop Length	non sewed Lc	Sewed Length	not non Sewed Len	Total splice length (Including Loop)
Edging - Red	bbPPP B	20	45	15	30	80 mm
Reinforced with 8000-50 inside the loop + Diagonal cut						

Lines concerned comment

- A6b
- AB2, A7b
- AB3
- A6a
- A7a
- AMU1
- A7
- AB
- BM4

Line and slice details	Splice Type	Loop Length	non sewed Lc	Sewed Length	not non Sewed Len	Total splice length (Including Loop)
Edging - Red	bbPPP B	20	45	15	30	80 mm
Reinforced with 8000-70 inside the loop + Diagonal cut						

Lines concerned comment

- A2b
- ASb
- A3b
- A1b
- ASa, A2a
- A1a, A3a
- A6
- A5
- KBU
- BM3
- BM2
- BM1
- A4b
- A4a

Line and slice details	Splice Type	Loop Length	non sewed Lc	Sewed Length	not non Sewed Len	Total splice length (Including Loop)
Name	bbPPP A	20	45	15	50	110 mm
Reinforced with 8000-90 inside the loop + Diagonal cut						

Lines concerned comment

- AM4
  - AM5
  - A3
  - A2
  - A4
  - A1
  - BR2
- million side loop + loop around the maillon (see picture)

Line and slice details	Splice Type	Loop Length	non sewed Lc	Sewed Length	not non Sewed Len	Total splice length (Including Loop)
Name	bbPPP A	20	45	15	50	110 mm
Reinforced with 8000-130 inside the loop + Diagonal cut						

Lines concerned comment

- AM1
  - AM2, AM1
  - AR1
  - BR1
- million side loop covered  
million side loop + loop around the maillon (see picture)

Line and slice details	Splice Type	Loop Length	non sewed Lc	Sewed Length	not non Sewed Len	Total splice length (Including Loop)
Name	bbPPP A	20	45	15	50	110 mm
Reinforced with 8000-230 inside the loop + Diagonal cut						

Lines concerned comment

- AR1
  - AR2
- million side loop covered  
million side loop covered

Line and slice details	DSL 140 - LPI Sewn
Lines concerned on glider:	ARL4

Line and slice details	DSL 140 - LPI Sewn
Lines concerned on glider:	KRL