

Measurement request from test house for CCC certification
From 28/09/2014 to next revision

Brand	Nova	Test house name	DHV Musterprüfstelle	AUTOMATIC CALCULATION
Model	Triton 2 light	CCC certification n°	DHV.GS-CCC-006-15	FILL UP THIS COLOR
Size	XS	Certification date	01.06.15	DELETE & PASTE DRAWING OR PICTURE

Canopy dimensions

	Rib n° from center	Distance	Tension	Manual tolerance	Aspect ratio 4*span / (chord A+2.5*Chord B)
Full Span	X	11770	3KG	±2%	6,469254552
1/2 Trailing Edge	X	5091	3KG	±1%	
Chord A	1	2265	3KG	±1%	
Chord B	2005	3KG	±1%		

Chord length, inlet position, tabs position measured from trailing edge.
(The tab A & B & C can be on different rib, take care to specify it)

On first lined rib with all lines (A,B,C,D) if not all tab on rib specify rib number

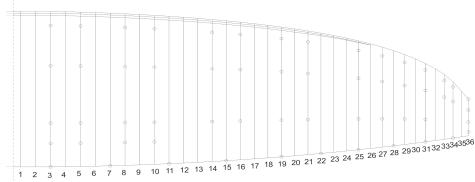
	Rib n° from center	Distance	Tension	Manual tolerance
Chord	3	2265	3KG	±10mm
Top of inlet	3	2260	3KG	±10mm
Bottom of inlet	3	2215	3KG	±10mm
Tab A	3	2050	3KG	±10mm
Tab B	3	1460	3KG	±10mm
Tab C	3	600	3KG	±10mm
Tab D	3	325	3KG	±10mm

On first lined rib Group 2 with all line (A,B,C,D) if not all tab on rib specify rib number

	Rib n° from center	Distance	Tension	Manual tolerance
Chord	16	2005	3KG	±10mm
Top of inlet	16	2000	3KG	±10mm
Bottom of inlet	16	1965	3KG	±10mm
Tab A	16	1815	3KG	±10mm
Tab B	16	1295	3KG	±10mm
Tab C	16	550	3KG	±10mm
			3KG	±10mm

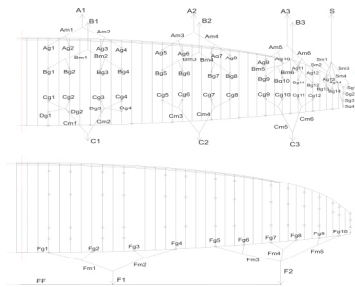
On last lined rib (stabilo) (from center)

	Rib n° from center	Distance	Tension	Manual tolerance
Chord		530	3KG	±10mm
Tab A		520	3KG	±10mm
Tab B		370	3KG	±10mm
Tab C		207	3KG	±10mm
Tab D		47	3KG	±10mm



Absolute line length from bottom riser to canopy

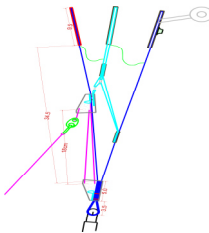
LINED RIB NUMBER	A	B	D	C	BRAKES	Tension	Manual tolerance
1	7409	7338	7490	7410	7677	SKG	±10mm
2	7339	7271	7424	7336	7301	SKG	±10mm
3	7307	7237	7384	7305	7093	SKG	±10mm
4	7239	7209	7408	7332	6942	SKG	±10mm
5	7234	7171	6612	7219	6777	SKG	±10mm
6	7161	7096		7146	6637	SKG	±10mm
7	7099	7037		7052	6598	SKG	±10mm
8	7108	7051		7088	6568	SKG	±10mm
9	6948	6904		6923	6585	SKG	±10mm
10	6884	6838		6850	6563	SKG	±10mm
11	6822	6783		6796	SKG	±10mm	
12	6813	6782		6802	SKG	±10mm	
13	6613	6586		6547	SKG	±10mm	
14	6549	6546			SKG	±10mm	
15	6485	6495			SKG	±10mm	
16					SKG	±10mm	
17					SKG	±10mm	
18					SKG	±10mm	
19					SKG	±10mm	
20					SKG	±10mm	
21					SKG	±10mm	
22					SKG	±10mm	
23					SKG	±10mm	
24					SKG	±10mm	



Riser length

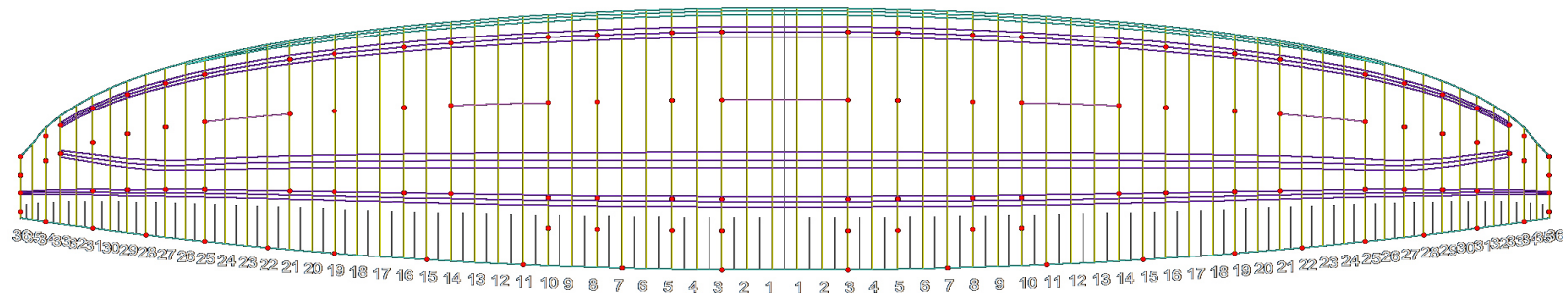
from bottom riser to top malleon on each branche	A	A'	B	B'	C	calculate d At	Tension	Manual tolerance	Attachment rod diameter in mm
Neutral	543		543		543		SKG	±5mm	6

Full speed setting	Manual tolerance	Full speed setting	Manual tolerance	Total speed Range (Δs+Δt)	Attachment rod diameter in mm
A-B	±5mm	B-B	±5mm	218	±5mm
B-C	±5mm	C-B	±5mm		



Supplier	Line type	Supplier	Line type S.M	Supplier	Line type S.M	Supplier	Line type S.M
A1	Liros PPSL191-RED	B1	Liros PPSL191-YEL	C1	Edeind ED8KU-120D-RED	S	Edeind ED8KU-120D-RED
A2	Liros PPSL191-RED	B2	Liros PPSL191-YEL	C2	Edeind ED8KU-120D-RED	SM01	Edeind ED8KU-500D-RED
A3	Edeind ED8KU-120D-RED	B3	Edeind ED8KU-120D-RED	C3	Edeind ED8KU-120D-RED	SM02	Edeind ED8KU-500D-RED
AM01	Edeind ED8KU-120D-RED	BM01	Edeind ED8KU-120D-RED	CM01	Edeind ED8KU-900D-RED	SM03	Edeind ED8KU-500D-RED
AM02	Edeind ED8KU-120D-RED	BM02	Edeind ED8KU-120D-RED	CM02	Edeind ED8KU-900D-RED	SM04	Edeind ED8KU-500D-RED
AM03	Edeind ED8KU-120D-RED	BM03	Edeind ED8KU-120D-RED	CM03	Edeind ED8KU-900D-RED	SG01	Liros ED8KU-500D-RED
AM04	Edeind ED8KU-120D-RED	BM04	Edeind ED8KU-120D-RED	CM04	Edeind ED8KU-900D-RED	SG02	Liros ED8KU-500D-RED
AM05	Edeind ED8KU-900D-RED	BM05	Edeind ED8KU-900D-RED	CM05	Edeind ED8KU-900D-RED	SG03	Liros ED8KU-500D-RED
AM06	Edeind ED8KU-900D-RED	BM06	Edeind ED8KU-900D-RED	CM06	Edeind ED8KU-900D-RED	SG04	Liros ED8KU-500D-RED
AG01	Edeind ED8KU-500D-RED	BG01	Edeind ED8KU-500D-RED	CG01	Edeind ED8KU-500D-RED	FF	Edeind ED7839-249-ORG
AG02	Edeind ED8KU-500D-RED	BG02	Edeind ED8KU-500D-RED	CG02	Edeind ED8KU-500D-RED	F1	Edeind ED8KU-90D-RED
AG03	Edeind ED8KU-500D-RED	BG03	Edeind ED8KU-500D-RED	CG03	Edeind ED8KU-500D-RED	F2	Edeind ED8KU-90D-RED
AG04	Edeind ED8KU-500D-RED	BG04	Edeind ED8KU-500D-RED	CG04	Edeind ED8KU-500D-RED	FM01	Liros ED8KU-500D-RED
AG05	Edeind ED8KU-500D-RED	BG05	Edeind ED8KU-500D-RED	CG05	Edeind ED8KU-500D-RED	FM02	Liros ED8KU-500D-RED
AG06	Edeind ED8KU-500D-RED	BG06	Edeind ED8KU-500D-RED	CG06	Edeind ED8KU-500D-RED	FM03	Liros ED8KU-500D-RED
AG07	Edeind ED8KU-500D-RED	BG07	Edeind ED8KU-500D-RED	CG07	Edeind ED8KU-500D-RED	FM04	Liros ED8KU-500D-RED
AG08	Edeind ED8KU-500D-RED	BG08	Edeind ED8KU-500D-RED	CG08	Edeind ED8KU-500D-RED	FM05	Liros ED8KU-500D-RED
AG09	Edeind ED8KU-500D-RED	BG09	Edeind ED8KU-500D-RED	CG09	Edeind ED8KU-500D-RED	FG01	Liros ED8KU-500D-RED
AG10	Edeind ED8KU-500D-RED	BG10	Edeind ED8KU-500D-RED	CG10	Edeind ED8KU-500D-RED	FG02	Liros ED8KU-500D-RED
AG11	Edeind ED8KU-500D-RED	BG11	Edeind ED8KU-500D-RED	CG11	Edeind ED8KU-500D-RED	FG03	Liros ED8KU-500D-RED
AG12	Edeind ED8KU-500D-RED	BG12	Edeind ED8KU-500D-RED	CG12	Edeind ED8KU-500D-RED	FG04	Liros ED8KU-500D-RED
AG13	Edeind ED8KU-500D-RED	BG13	Edeind ED8KU-500D-RED	DG01	Edeind ED8KU-500D-RED	FG05	Liros ED8KU-500D-RED
AG14	Edeind ED8KU-500D-RED	BG14	Edeind ED8KU-500D-RED	DG02	Edeind ED8KU-500D-RED	FG06	Liros ED8KU-500D-RED
				DG03	Edeind ED8KU-500D-RED	FG07	Liros ED8KU-500D-RED
				DG04	Edeind ED8KU-500D-RED	FG08	Liros ED8KU-500D-RED
						FG09	Liros ED8KU-500D-RED
						FG10	Liros ED8KU-500D-RED

Other pictures & drawings requested from Test Laboratories



Diagonal attached to every A, B, and C loop. (except rib 34, and 36)
double diagonals on ribs 3, 10, 14, 21, 25