

Measurement request from test house for CCC certification From February 2016

Brand	Gin Gliders Inc.	Test house name	DHV
Model	Boomerang 11	CCC certification n°	DHV CCC-010-17
Size	L	Certification date	01.05.2017
Serial n°	BG03-Q82P0017P		

Canopy dimensions

Position	Rib n° from center	Distance [mm]	Tension [daN]	Manual tolerances	Aspect ratio < 7.90 4*span / (chord A+2.5*Chord B)		Number cells
Full Span	x	13985	5	+/-2%	7,69		109
1/2 Trailing Edge	x	7155	5	+/-1%			
Chord A	1	2270	1	+/-1%			
Chord B	22	2000	1	+/-1%	Scale factor	1,13	

Chord length, inlet position, tabs position measured from trailing edge.

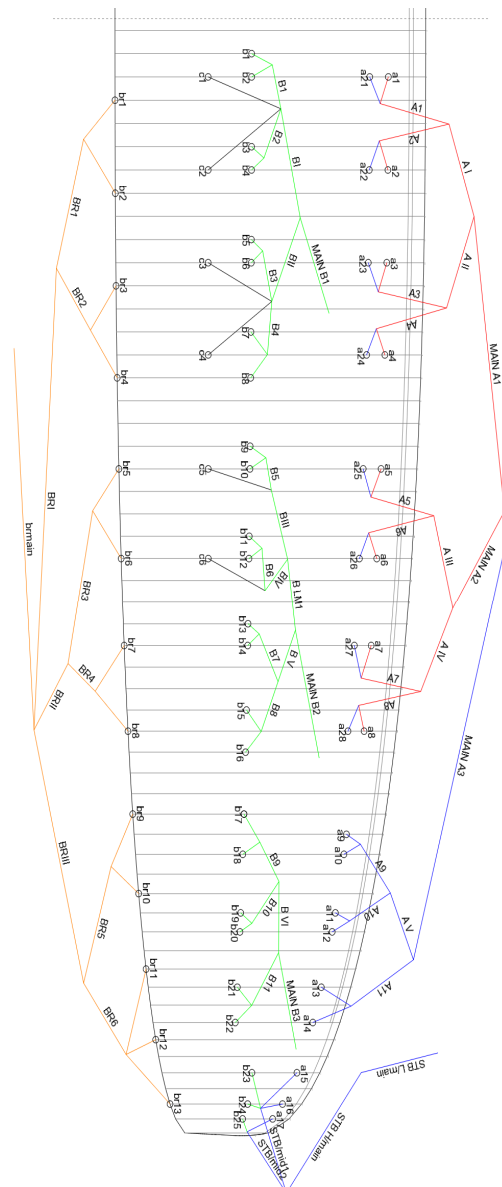
(The tab A & B & C can be on different rib, take care to specify it)

On first lined rib (from center)	Rib n° from center	Distance [mm]	Tension [daN]	Manual tolerances
Chord	2	2255	1	+/-1%
Top of inlet	2	2175	1	+/-1%
Bottom of inlet	2	2135	1	+/-1%
Tab Aa*	3	1976	1	+/-10mm
Tab Ab*	3	1835	1	+/-10mm
Tab B*	2	1001	1	+/-10mm
Tab C*	3	685	1	+/-10mm

On last lined rib of Group 2 (from center)	Rib n° from center	Distance [mm]	Tension [daN]	Manual tolerances
Chord	32	1681	1	+/-1%
Top of inlet	32	1614	1	+/-1%
Bottom of inlet	32	1593	1	+/-1%
Tab Aa*	32	1484	1	+/-10mm
Tab Ab*	32	1385	1	+/-10mm
Tab B*	33	736	1	+/-10mm
Tab C*	24	590	1	+/-10mm

On last lined rib (stabilo, from center)	Rib n° from center	Distance [mm]	Tension [daN]	Manual tolerances
Chord	53	609	1	+/-1%
Tab A*	53	524	1	+/-10mm
Tab B*	53	366	1	+/-10mm

*Bridle (tab) position measurement:
end of trailing edge to center bridle (tab)



ABSOLUTE LINE LENGHT

Absolute line length from bottom riser to canopy in mm with 5daN of tension (Manual tolerances +/-10mm)

Lined Rib n°	A1			A2			B		
	Manual	Glider	Delta	Manual	Glider	Delta	Manual	Glider	Delta
1	8935	8928	-7	8904	8896	-8	8953	8948	-5
2	8811	8803	-8	8778	8771	-7	8890	8887	-3
3	8776	8770	-6	8744	8738	-6	8782	8773	-9
4	8832	8827	-5	8804	8796	-8	8773	8764	-9
5	8741	8733	-8	8712	8707	-5	8746	8741	-5
6	8612	8609	-3	8585	8580	-5	8731	8725	-6
7	8561	8559	-2	8536	8535	-1	8770	8766	-4
8	8584	8579	-5	8566	8564	-2	8856	8847	-9
9	8393	8389	-4				8772	8765	-7
10	8347	8343	-4				8709	8702	-7
11	8256	8258	2				8603	8598	-5
12	8249	8247	-2				8596	8588	-8
13	8181	8181	0				8553	8550	-3
14	8174	8175	1				8537	8533	-4
15	8030	8036	6				8555	8552	-3
16	7984	7988	4				8617	8613	-4
17	7978	7982	4				8423	8421	-2
18							8330	8329	-1
19							8247	8244	-3
20							8242	8238	-4
21							8176	8179	3
22							8170	8170	0
23							8018	8022	4
24							7989	7990	1
25							7980	7987	7

Lined Rib n°	C		
	Manual	Glider	Delta
1	8979	8969	-10
2	8863	8857	-6
3	8819	8813	-6
4	8886	8878	-8
5	8800	8790	-10
6	8686	8682	-4

Riser length

From bottom riser to top maillon on each branche in mm with 5daN (Manual tolerances +/-5mm)

Trimm speed setting	A1	A3	Stabi	B	Δt (= A1-B)	Attachment rod diameter [mm]
Manual	520	495	510	520	0	10
Glider	523	495	514	524	-1	

Full speed setting	Δa (=B-A1)	B-A3	Total speed Range ($\Delta a + \Delta t$)
Manual	140	120	140
Glider	142	118	141

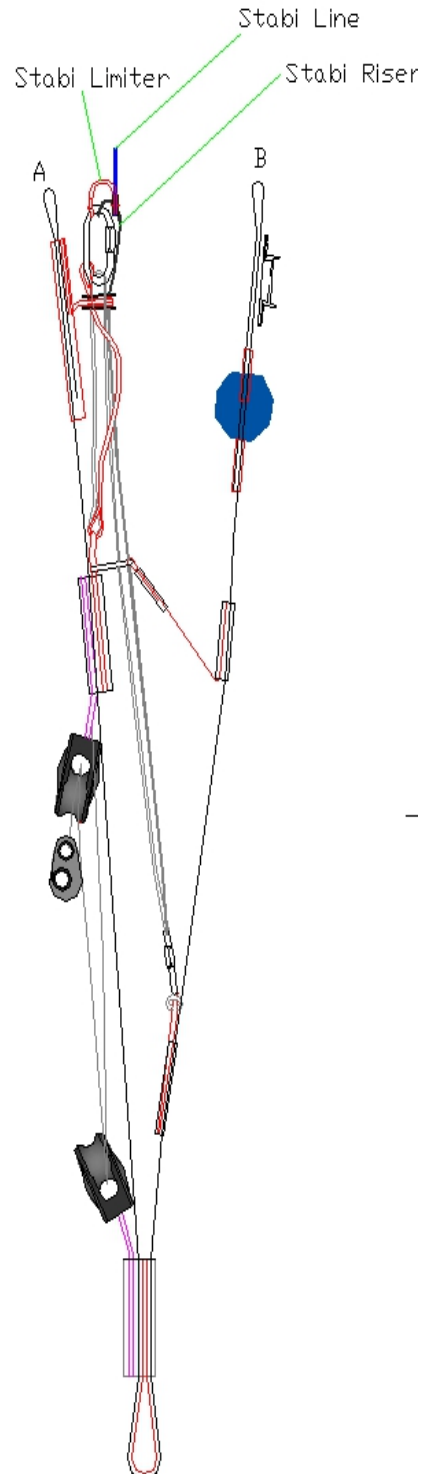
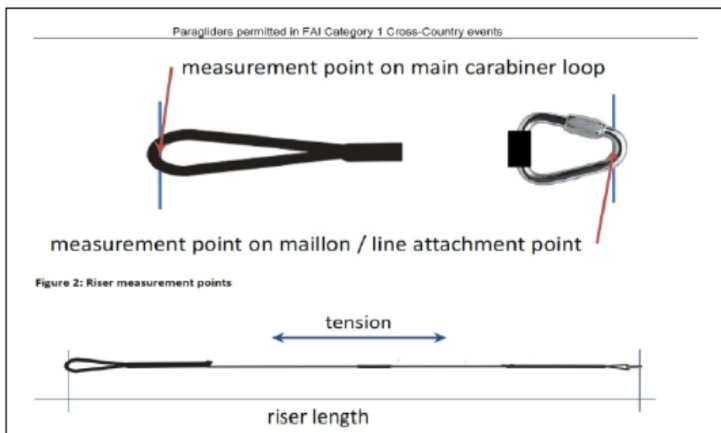
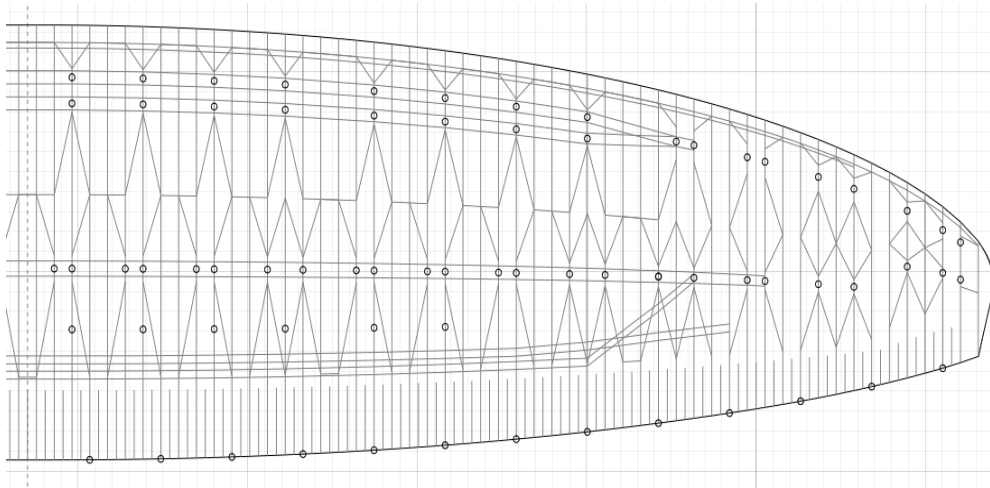


Table of lines quality													
Upper													
	A1		A2		B		C		BR				
1	Edlerid	8000/U-090	Edlerid	8000/U-090	Edlerid	8000/U-050	Edlerid	8000-025	Edlerid	8000-025			
2	Edlerid	8000/U-070	Edlerid	8000/U-050	Edlerid		Edlerid		Edlerid		Edlerid		
3	Edlerid	8000/U-050	Edlerid		Edlerid		Edlerid		Edlerid		Edlerid		
4	Edlerid	8000/U-070	Edlerid		Edlerid		Edlerid		Edlerid		Edlerid		
5	Edlerid	8000/U-090	Edlerid		Edlerid		Edlerid		Edlerid		Edlerid		
6	Edlerid	8000/U-070	Edlerid		Edlerid		Edlerid	Edlerid	Edlerid				
7	Edlerid	8000/U-050	Edlerid		Edlerid		8000-025		Edlerid		Edlerid		
8	Edlerid	8000/U-070	Edlerid		Edlerid				Edlerid		Edlerid	Edlerid	
9	Edlerid	8000/U-050			Edlerid	Edlerid			Edlerid		Edlerid		
10	Edlerid			Edlerid	Edlerid	Edlerid			Edlerid		Edlerid		
11	Edlerid			Edlerid	Edlerid	Edlerid			Edlerid	Edlerid			
12	Edlerid			Edlerid	Edlerid	Edlerid			Edlerid	Edlerid			
13	Edlerid			Edlerid	Edlerid	Edlerid			Edlerid	Edlerid			
14	Edlerid			Edlerid	Edlerid	Edlerid			Edlerid	Edlerid			
15	Edlerid			8000-025		Edlerid			Edlerid	Edlerid	Edlerid		
16	Edlerid					Edlerid			Edlerid	Edlerid	Edlerid	Edlerid	
17	Edlerid	Edlerid	Edlerid			Edlerid	Edlerid	Edlerid					
18				Edlerid	Edlerid	Edlerid	Edlerid						
19				Edlerid	Edlerid	Edlerid	Edlerid	Edlerid					
20				Edlerid	Edlerid	Edlerid	Edlerid	Edlerid					
21				Edlerid	Edlerid	Edlerid	Edlerid	Edlerid					
22				Edlerid	Edlerid	Edlerid	Edlerid	Edlerid					
23				Edlerid	Edlerid	Edlerid	Edlerid	Edlerid					
24				Edlerid	Edlerid	Edlerid	Edlerid	Edlerid					
25				Edlerid	Edlerid	Edlerid	Edlerid	Edlerid					
H/middle													
	A				B				BR H/Middle				
1	Edlerid	8000/U-130			Edlerid	8000/U-050			Edlerid	800-025			
2	Edlerid				Edlerid				Edlerid		Edlerid	Edlerid	
3	Edlerid				Edlerid				Edlerid		Edlerid	Edlerid	
4	Edlerid				Edlerid				Edlerid		Edlerid	Edlerid	
5	Edlerid				Edlerid				Edlerid		Edlerid	Edlerid	
6	Edlerid				Edlerid				Edlerid		Edlerid	Edlerid	
7	Edlerid	8000/U-070			Edlerid		8000-025						
8	Edlerid				Edlerid						Edlerid	Edlerid	Edlerid
9	Edlerid				Edlerid						Edlerid	Edlerid	Edlerid
10	Edlerid	8000/U-050			Edlerid			Edlerid	Edlerid	Edlerid	Edlerid		
11	Edlerid				Edlerid			Edlerid	Edlerid	Edlerid			
STB/mid1					Edlerid	Edlerid		Edlerid	Edlerid	Edlerid			
STB/mid2					Edlerid	Edlerid		Edlerid	Edlerid	Edlerid			
Middle													
	A				B					BR L/Middle			
1	Edlerid	8000/U-190			Edlerid	8000/U-090				Edlerid	8000/U-050		
2	Edlerid				Edlerid					Edlerid		Edlerid	Edlerid
3	Edlerid				Edlerid		Edlerid			Edlerid		Edlerid	
4	Edlerid				Edlerid		Edlerid			Edlerid		Edlerid	
5	Edlerid				Edlerid		Edlerid			Edlerid		Edlerid	
6	Edlerid				Edlerid		Edlerid			Edlerid		Edlerid	
L/Middle													
					B								
1					Edlerid		8000/U-090						
Main													
	A				B				BR H/Main				
1	Edlerid	8000/U-360			Edlerid	8000/U-190			Edlerid	8000/U-090			
2	Edlerid				Edlerid	Edlerid			Edlerid	Edlerid			
3	Edlerid				Edlerid	Edlerid			Edlerid	Edlerid			
STB H/Main	Edlerid	8000/U-050			Edlerid	8000/U-050			Liros	PPSL160			
STB L/Main	Liros	DSL70											

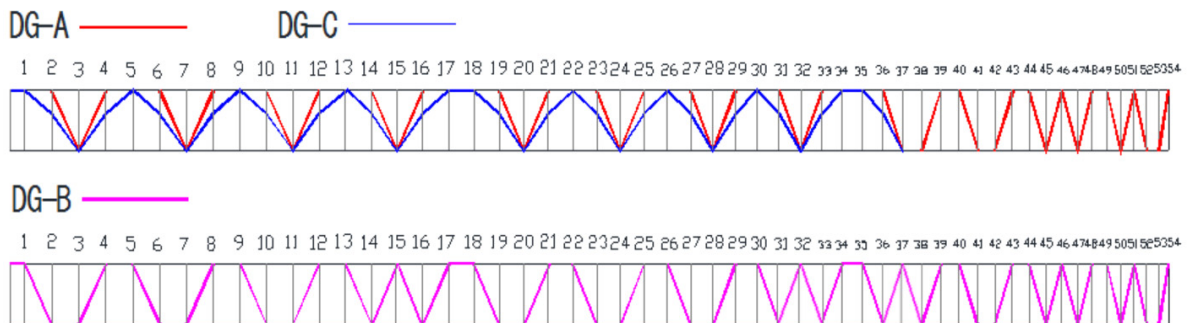
Upper and lower line loop reinforcement: all Edlerid 8000 lines have upper and lower reinforcements

Other pictures & drawings requested from test House

Diagonals, Hstraps and Mini Ribs (top view)



Diagonals (Front view)



Vent (Inlet) shape

